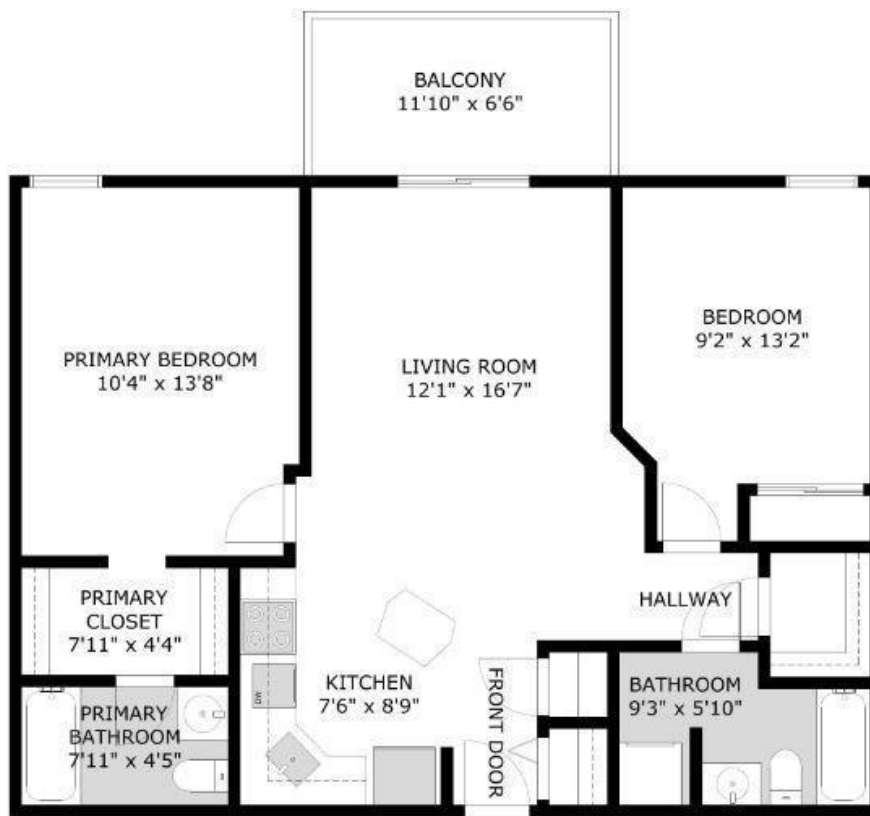


155 Edwards Drive Southwest, Edmonton, AB, Canada



FLOOR 1

SIZE AND DIMENSIONS ARE APPROXIMATE, ACTUAL MAY VARY.

## Edmonton Alberta

\$175,000

Welcome to Park Place Ellerslie Crossing. This unit includes 2 bedrooms, 2 bathrooms, storage room and 3 parking stalls (tandem parking underground and a stall outdoors). This place is fantastic for hosting friends with a large open concept kitchen with a kitchen island, living room space and a large balcony that overlooks the community. There is a gym room available for tenants. Easy access to Anthony Henday and close distance to shopping centres! (id:6769)

Living room Measurements not available

Dining room Measurements not available

Kitchen Measurements not available

Primary Bedroom Measurements not available

Bedroom 2 Measurements not available

Listing Presented By:



Originally Listed by:  
Real Broker

<http://www.jacksonho.ca/>

**RE/MAX Elite**

**RE/MAX ELITE**

8104 160 Ave NW, Edmonton, AB,  
T5Z 3J8

Phone: 780-406-4000

Fax:

[broker@eliterealestate.ca](mailto:broker@eliterealestate.ca)

The property information on this website is derived from the Canadian Real Estate Association's Data Distribution Facility (DDF®). DDF® references real estate listings held by various brokerage firms and franchisees. The accuracy of information is not guaranteed and should be independently verified. The trademarks REALTOR®, REALTORS® and the REALTOR® logo are controlled by The Canadian Real Estate Association (CREA) and identify real estate professionals who are members of CREA. The trademarks MLS®, Multiple Listing Service® and the associated logos are owned by CREA and identify the quality of services provided by real estate professionals who are members of CREA.