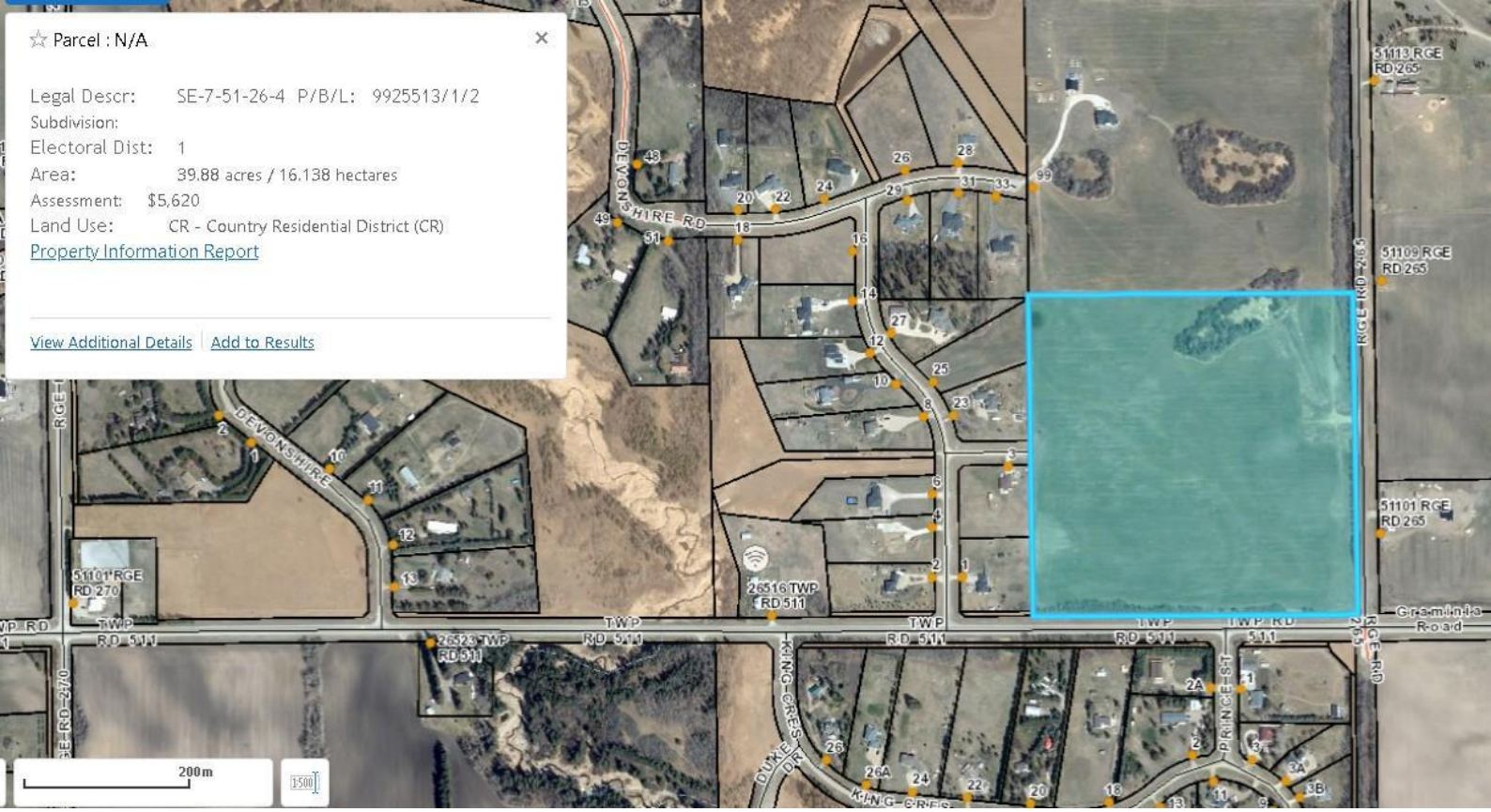


☆ Parcel : N/A

Legal Descr: SE-7-51-26-4 P/B/L: 9925513/1/2  
Subdivision:  
Electoral Dist: 1  
Area: 39.88 acres / 16.138 hectares  
Assessment: \$5,620  
Land Use: CR - Country Residential District (CR)  
[Property Information Report](#)

[View Additional Details](#) | [Add to Results](#)



# Spruce Grove Alberta

\$1,400,000

40 Acres, rolling open land. Ideal site for your Estate Home or Hobby Farm. Great open rolling meadows, good soil suitable for Market Garden or good pasture to keep a few horses. This property has COUNTY APPROVAL for a 12 Lot (2-acre parcels) re-subdivision, all ready to go to the next development step. The sellers would consider a PARTNERSHIP ARRANGEMENT with a HOME BUILDER to complete the development. This property is just a short 20 minute drive to west Edmonton or about the same to the International Airport. Devon is 5 minutes across the river. This area is in the Graminia Community School Area(k to 9), school is 2 kms west. (id:6769)

Listing Presented By:



Originally Listed by:  
RE/MAX Excellence



## REMAX ELITE

8104 160 Ave NW, Edmonton, AB,  
T5Z 3J8

Phone: 780-406-4000  
Fax:  
[broker@eliterealestate.ca](mailto:broker@eliterealestate.ca)

The property information on this website is derived from the Canadian Real Estate Association's Data Distribution Facility (DDF®). DDF® references real estate listings held by various brokerage firms and franchisees. The accuracy of information is not guaranteed and should be independently verified. The trademarks REALTOR®, REALTORS® and the REALTOR® logo are controlled by The Canadian Real Estate Association (CREA) and identify real estate professionals who are members of CREA. The trademarks MLS®, Multiple Listing Service® and the associated logos are owned by CREA and identify the quality of services provided by real estate professionals who are members of CREA.