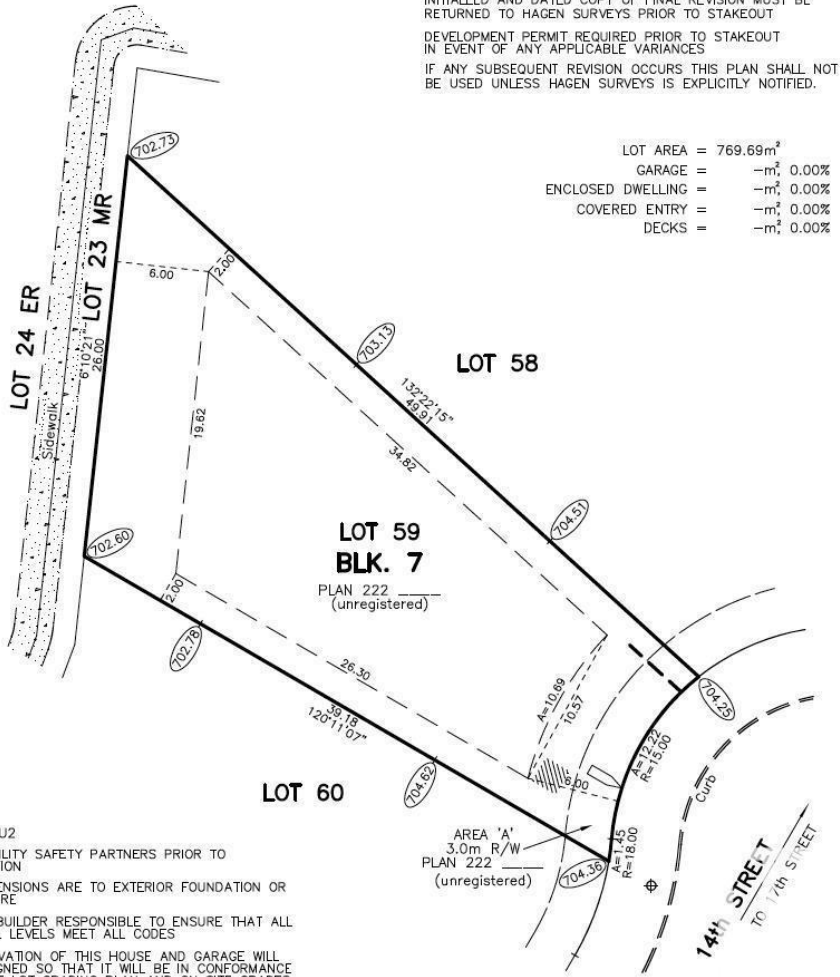


INITIALED AND DATED COPY OF FINAL REVISION MUST BE RETURNED TO HAGEN SURVEYS PRIOR TO STAKEOUT
DEVELOPMENT PERMIT REQUIRED PRIOR TO STAKEOUT IN EVENT OF ANY APPLICABLE VARIANCES
IF ANY SUBSEQUENT REVISION OCCURS THIS PLAN SHALL NOT BE USED UNLESS HAGEN SURVEYS IS EXPLICITLY NOTIFIED.

LOT AREA = 769.69m²
GARAGE = -m², 0.00%
ENCLOSED DWELLING = -m², 0.00%
COVERED ENTRY = -m², 0.00%
DECKS = -m², 0.00%



Rural Leduc County Alberta

\$325,000

Ready to build your dream home on this exceptional ravine-backing in the beautiful community of Irvine Creek? This expansive pie-shaped lot offers a rare 40-foot building pocket and backs onto green space and ravine-- perfect for creating your private oasis. Located in a fully developed subdivision, the property comes with full municipal services including city water, city sewer, gas, power, and high-speed internet. Choose your own builder or build yourself--surrounded by other custom, high-end homes. Just minutes from Beaumont, Edmonton, Nisku, Leduc, and the Edmonton International Airport. (id:6769)

Listing Presented By:



Originally Listed by:
Royal Lepage Arteam Realty

RE/MAX ELITE

RE/MAX Elite

Phone: 780-406-4000
Fax:
executive@eliterealestate.ca