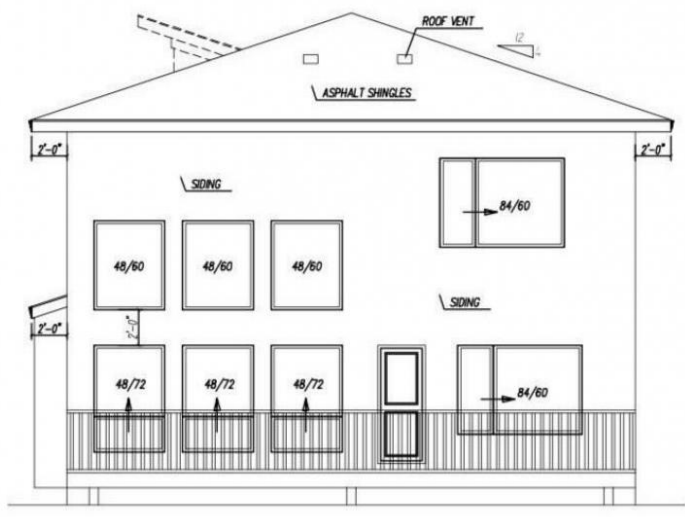




FRONT ELEVATION



REAR ELEVATION

# Edmonton Alberta

\$899,000

Welcome to Riverstead ant Keswick, located in the vibrant Keswick subdivision. The main level of this residence comprises a bedroom and a full bathroom, providing convenience and flexibility. The living area is impressively spacious, featuring an open-to-below space that fosters a warm and inviting atmosphere. The kitchen is stylish with dual-tone cabinets, elegant quartz countertops, and a separate spice kitchen for added functionality. Ascending to the second floor, the layout is crafted for both comfort and opulence. Two master bedrooms, each with its private ensuite, provide a combination of privacy and luxury. Bedroom 3 and the bonus room share a common bathroom, ensuring convenience for all occupants. The house is adorned with contemporary finishes & conveniently within walking distance, this residence offers accessibility to a K-9 school, a shopping plaza, and all major amenities. (id:6769)

- Living room Measurements not available
- Dining room Measurements not available
- Kitchen Measurements not available
- Den Measurements not available

- Primary Bedroom Measurements not available
- Bedroom 2 Measurements not available
- Bedroom 3 Measurements not available

Listing Presented By:



Originally Listed by:  
RE/MAX Excellence

<https://manjotkaur.exprealty.com/>

**RE/MAX ELITE**

**RE/MAX Elite**

Phone: 780-406-4000  
Fax:  
[executive@eliterealestate.ca](mailto:executive@eliterealestate.ca)