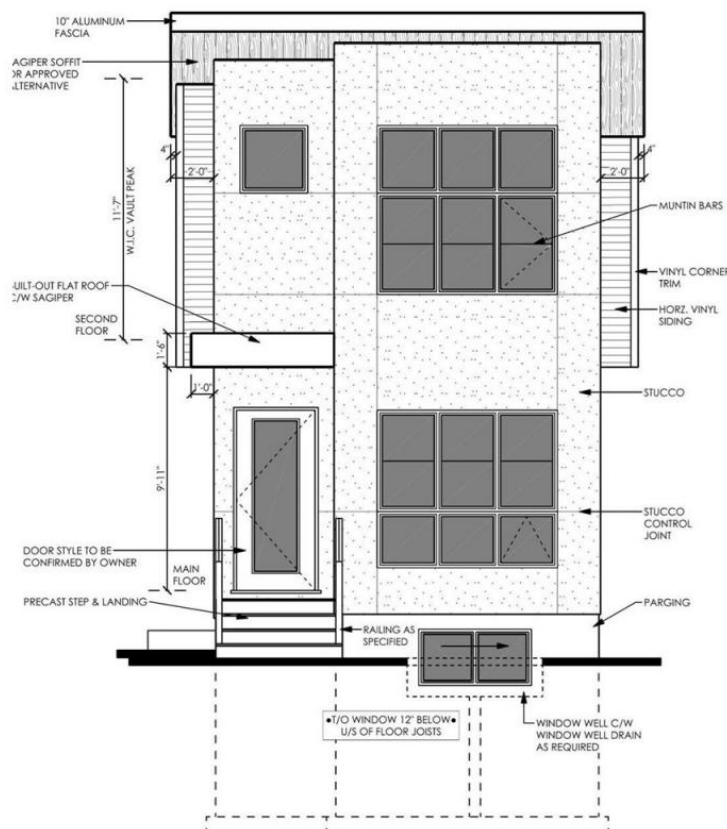


FRONT ELEVATION



Edmonton Alberta

\$799,980

Basement Suite included!! Welcome to one of Edmontons highly sought after neighborhoods of Hazeldean , this brand new 2 storey home is designed to allow you to live in the modern era yet still have the traditional heritage style feel of the neighborhood. This professionally styled home is close to the University of Alberta Hospital, Wyte Ave and the UofA. The open concept layout features, engineered hardwood floors, fireplace with tile surround, massive and inviting kitchen with quartz counter tops. The colors are tastefully chosen throughout the home from fixtures to tiles to cabinets. Head upstairs to the spacious master bedroom with large walk-in closet with custom built organizers and a 4 pc ensuite with a custom tiled shower and double vanities. There's also a 2nd 5pc bathroom and 2 more bedrooms. The laundry room is conveniently located on the second floor with upper cabinets. The basement will be completed by the builder with a legal suite. This is your chance to own a brand new affordable infill. (id:6769)

Bedroom 4 Measurements not available

Second Kitchen Measurements not available

Living room Measurements not available

Dining room Measurements not available

Kitchen Measurements not available

Primary Bedroom Measurements not available

Bedroom 2 Measurements not available

Bedroom 3 Measurements not available

Listing Presented By:



Originally Listed by:
Royal LePage Arteam Realty

<http://www.wallykarout.com/>

RE/MAX ELITE

RE/MAX Elite

Phone: 780-406-4000

Fax:

executive@eliterealestate.ca