



## Edmonton Alberta

\$189,900

Spectacular RIVER VALLEY VIEW from this 2 bed/1bath CORNER UNIT in the Valhalla! Welcome home to a beautifully upgraded 10th FLOOR space that includes everything YOU need, all in one place. This quiet CONCRETE building at the edge of Downtown boasts party/social room, indoor salt-water POOL, recreation room, onsite manager, patio space overlooking the River Valley.. AND has condo fees that include ALL UTILITIES. Laminate flooring throughout main living areas, newer kitchen + appliances & custom window coverings. Dining room & living room are both spacious w/patio door access to WEST facing balcony that's IDEAL for Edmonton sunsets, fireworks, nature.. and SO much more! Bedrooms are both great sizes w/easy access to 4 pc main bath. In-suite storage w/built-in shelving, central air conditioning & UNDERGROUND PARKING are the cherry on top. Nestled on mature TREE LINED streets & close to LRT, Victoria GOLF COURSE, TRAILS, eateries & entertainment GALORE w/in minutes walk.. you need to see it to believe it! (id:6769)

Living room 4.06 m X 5.98 m

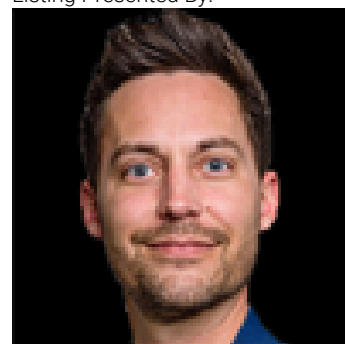
Dining room 2.24 m X 2.58 m

Kitchen 2.41 m X 2.58 m

Primary Bedroom 3.21 m X 4.22 m

Bedroom 2 4.26 m X 3 m

Listing Presented By:



Originally Listed by:  
RE/MAX Elite

<http://www.steveleddy.ca/>

**RE/MAX ELITE**

**RE/MAX Elite Sherwood Park**

#116, 150 Chippewa Rd ,  
Edmonton, Alberta,

Phone: 780-984-9399

Fax:

steveleddy@hotmail.com