



Sherwood Park Alberta

\$819,900

The one you've been waiting for.. Welcome home to this SHOW STOPPER in Summerwood w/over 3800 sq ft of luxury finished living space! Step inside to a generous sized entry that flows into the open DEN. Living room is BRIGHT and OPEN w/wall of windows, gleaming HARDWOOD floors, gas fireplace + overlooks dining room that seats 8 comfortably & back yard. Chef's kitchen is AMAZING w/stunning GRANITE counters, SS appliances, corner pantry, full height WALNUT cupboards w/under cabinet lighting, and more! 3 great sized bedrooms up, including master SUITE w/5 pc SPA like ensuite bath & walk in closet. Relax in style with 2 bonus/flex rooms, 5 pc main bath and HUGE laundry room! Basement is fully finished w/bathroom already roughed-in + ready for YOUR personal touches to bring it all to life. Back yard is DIALLED IN w/new Herringbone deck, and is PERFECT for entertaining. OVERSIZED double garage, updated paint/lighting, central AC, reverse osmosis + water softener, and SO much more! See it today and DON'T delay.. (id:6769)

Family room 8.82 m X 7.78 m

Utility room 3.65 m X 7.78 m

Living room 5.08 m X 4.81 m

Dining room 5.06 m X 3.38 m

Kitchen 4.76 m X 5.92 m

Den 3.01 m X 2.6 m

Primary Bedroom 6.42 m X 3.96 m

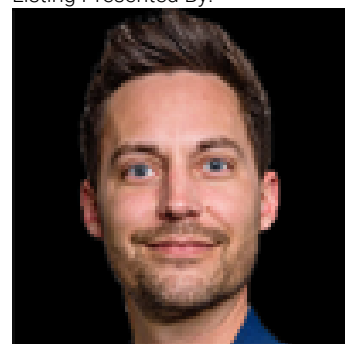
Bedroom 2 4.6 m X 2.9 m

Bedroom 3 4.26 m X 3.01 m

Bonus Room 4.17 m X 4.27 m

Laundry room 2.21 m X 3.08 m

Listing Presented By:



Originally Listed by:
RE/MAX Elite

sleddy@remax.net
<http://www.steveleddy.ca/>

RE/MAX ELITE

RE/MAX Elite Sherwood Park

#116, 150 Chippewa Rd ,
Edmonton, Alberta,

Phone: 780-984-9399

Fax:

steveleddy@hotmail.com