



Edmonton Alberta

\$149,900

Look no further!! Welcome home to the TOP FLOOR of Park Place Ellerslie Crossing, where convenience and comfort go hand in hand. Perfect for investors and first time buyers alike, you'll find affordability is the name of the game. Step inside to a BRIGHT and OPEN floor plan with VAULTED ceilings, excellent paint job and everything you crave in YOUR new pad! Kitchen offers LOADS of counter space & cupboards, new SS appliances and eat-in bar, perfect for the inner chef. Living room is great size with TONS of natural light, space for dining, and enough room for all your effects + access to W facing balcony! Master bedroom is spacious, with enough room for King size bed + dressers and closet space. 4pc bath with in-suite laundry and in-suite storage room complete the FULLY usable space. Surface parking stall, quick access to A. Henday, parks, trails, amenities and more make this unit a MUST SEE to believe. (id:6769)

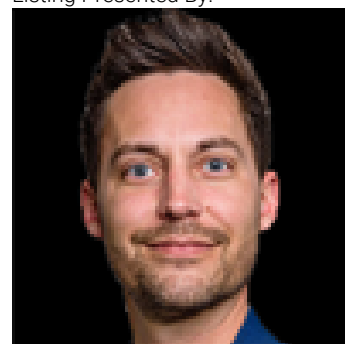
Living room 4.76 m X 3.55 m

Kitchen 3.63 m X 3.55 m

Primary Bedroom 4.07 m X 3.37 m

Storage 1.84 m X 1.54 m

Listing Presented By:



Originally Listed by:
RE/MAX Elite

<http://www.steveleddy.ca/>

RE/MAX ELITE

RE/MAX Elite Sherwood Park

#116, 150 Chippewa Rd ,
Edmonton, Alberta,

Phone: 780-984-9399

Fax:

steveleddy@hotmail.com