



## Rural Sturgeon County Alberta

None

# \$829,900

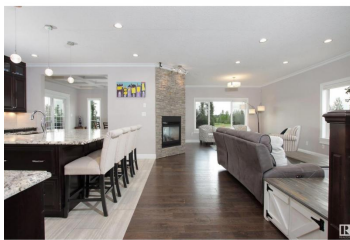
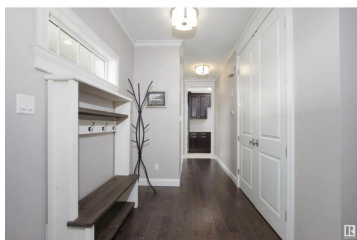


One look and you're hooked! Nestled on 3.19 acres with over 4650 sq ft of luxury living space, you'll notice quality around every corner. Charming E facing veranda greets you, then step inside to generous sized foyer that opens into grand living space with stunning HARDWOOD & ceramic tile ...For more information, please visit the website.



Family room 6.99 m X 9.05 m  
Den 3.83 m X 2.12 m  
Bedroom 4 3.83 m X 3.48 m  
Utility room 6.9 m X 4.05 m  
Living room 7.54 m X 5.07 m  
Dining room 3.3 m X 5.13 m

Kitchen 4.96 m X 4.38 m  
Primary Bedroom 4.02 m X 5.86 m  
Bedroom 2 3.62 m X 3.65 m  
Bedroom 3 3.65 m X 3.89 m  
Bonus Room 3.79 m X 3.99 m  
Loft 4.97 m X 7.06 m



### Steve W. Leddy

RE/MAX Elite

Phone: (780) 984-9399

<http://www.steveleddy.ca/>



RE/MAX Elite Sherwood Park  
#116, 150 Chippewa Rd  
Edmonton, Alberta,  
Canada