



\$179,800

Three bedroom bungalow backing onto park reserve. Property has been fixed up and is rentable or ready for quick possession (id:6769)

Living room 3.57 m X 3.57 m

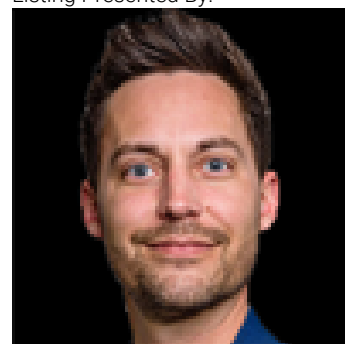
Kitchen 3.66 m X 3.7 m

Primary Bedroom 2.86 m X 3.49 m

Bedroom 2 1.8 m X 3.78 m

Bedroom 3 2.89 m X 3.47 m

Listing Presented By:



Originally Listed by:
RE/MAX Elite

<http://www.denisrowley.com/>

RE/MAX ELITE

RE/MAX Elite Sherwood Park

#116, 150 Chippewa Rd ,
Edmonton, Alberta,

Phone: 780-984-9399

Fax:

steveleddy@hotmail.com

The property information on this website is derived from the Canadian Real Estate Association's Data Distribution Facility (DDF®). DDF® references real estate listings held by various brokerage firms and franchisees. The accuracy of information is not guaranteed and should be independently verified. The trademarks REALTOR®, REALTORS® and the REALTOR® logo are controlled by The Canadian Real Estate Association (CREA) and identify real estate professionals who are members of CREA. The trademarks MLS®, Multiple Listing Service® and the associated logos are owned by CREA and identify the quality of services provided by real estate professionals who are members of CREA.