



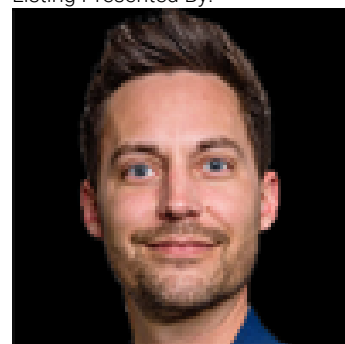
\$849,900

Pond-Side Perfection in Belle Rive - Walkout Home with In-Law Suite! Imagine waking up to serene water views every day in this beautifully maintained walkout home. Backing onto a tranquil pond, it offers 2 bedrooms upstairs, 1 bedroom down, and space to add a 4th. The main floor features a bright living room, spacious kitchen with tile backsplash, and dining area with stunning vistas. Upgrades over the years include a durable concrete tile roof, hardwood in bedrooms, new vinyl plank in the theatre/rec room, and plush basement carpet. The walkout basement boasts a full bath and secondary kitchen--ideal for an in-law suite or guest retreat. Enjoy a landscaped backyard perfect for entertaining, plus a double attached garage. Conveniently located near parks, schools, and shopping, this home combines comfort, style, and tranquility. A rare chance to live the pond-side lifestyle in Belle Rive! (id:6769)

Bedroom 3 2.8 m X 3.8 m  
Second Kitchen 4 m X 2 m  
Media 6.9 m X 4.1 m  
Living room 5.6 m X 6.3 m

Dining room 3.2 m X 5.3 m  
Kitchen 4.3 m X 4.9 m  
Primary Bedroom 4 m X 6.2 m  
Bedroom 2 3.9 m X 2.8 m

Listing Presented By:



Originally Listed by:  
RE/MAX Elite



**RE/MAX Elite Sherwood Park**

#116, 150 Chippewa Rd ,  
Edmonton, Alberta,

Phone: 780-984-9399  
Fax:  
steveleddy@hotmail.com

The property information on this website is derived from the Canadian Real Estate Association's Data Distribution Facility (DDF®). DDF® references real estate listings held by various brokerage firms and franchisees. The accuracy of information is not guaranteed and should be independently verified. The trademarks REALTOR®, REALTORS® and the REALTOR® logo are controlled by The Canadian Real Estate Association (CREA) and identify real estate professionals who are members of CREA. The trademarks MLS®, Multiple Listing Service® and the associated logos are owned by CREA and identify the quality of services provided by real estate professionals who are members of CREA.