

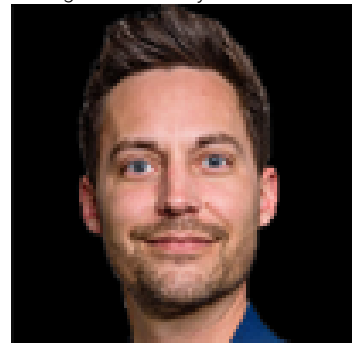


## Edmonton Alberta

\$400,000

Cambridge lofts Commercial Condo with a great main floor Condo business opportunity in the Cambridge Building on Jasper Ave with a total of 1,320 sq ft. . The property includes 3 titled covered parking stalls with 2 of them oversized. The main level has 893 sq feet. The upper mezzanine is 429 sq feet. The location is close to all business districts, restaurants and entertainment venues. Just a quick walk to Central LRT station. There are 200 rental condos in the Cambridge building. The area is surrounded by numerous restaurants, shops, and transportation. (id:6769)

Listing Presented By:



Originally Listed by:  
REMAX River City

<http://www.johnstonhomes.ca/>

**RE/MAX ELITE**

**RE/MAX Elite Sherwood Park**

#116, 150 Chippewa Rd ,  
Edmonton, Alberta,

Phone: 780-984-9399

Fax:

steveleddy@hotmail.com

The property information on this website is derived from the Canadian Real Estate Association's Data Distribution Facility (DDF®). DDF® references real estate listings held by various brokerage firms and franchisees. The accuracy of information is not guaranteed and should be independently verified. The trademarks REALTOR®, REALTORS® and the REALTOR® logo are controlled by The Canadian Real Estate Association (CREA) and identify real estate professionals who are members of CREA. The trademarks MLS®, Multiple Listing Service® and the associated logos are owned by CREA and identify the quality of services provided by real estate professionals who are members of CREA.