



## Sherwood Park Alberta

\$546,900

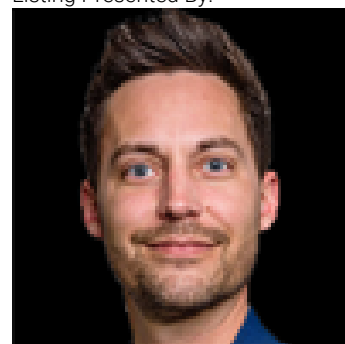
Welcome to modern luxury in Cambrian—one of Sherwood Park's newest and most vibrant communities. PICK YOUR interior finishes at this stage - Garage included. This stunning 3-bedroom, 2.5-bath home offers a functional, stylish layout with thoughtful design throughout. The main floor features a striking two-tiered living space filled with natural light, perfect for entertaining or relaxing. Built-in arches add architectural charm, while 9-foot ceilings on both the upper floor and basement create an airy, open feel. The chef-inspired kitchen and contemporary finishes throughout elevate the space. Upstairs, retreat to a spa-like ensuite in your spacious primary suite. A double garage is included for added convenience. With every detail carefully curated and a location that blends green space with urban ease, this home is the perfect blend of sophistication and comfort. (id:6769)

Primary Bedroom Measurements not available

Bedroom 3 Measurements not available

Bedroom 2 Measurements not available

Listing Presented By:



Originally Listed by:  
Exp Realty

**RE/MAX ELITE**

**RE/MAX Elite Sherwood Park**

#116, 150 Chippewa Rd ,  
Edmonton, Alberta,

Phone: 780-984-9399

Fax:

steveleddy@hotmail.com

The property information on this website is derived from the Canadian Real Estate Association's Data Distribution Facility (DDF®). DDF® references real estate listings held by various brokerage firms and franchisees. The accuracy of information is not guaranteed and should be independently verified. The trademarks REALTOR®, REALTORS® and the REALTOR® logo are controlled by The Canadian Real Estate Association (CREA) and identify real estate professionals who are members of CREA. The trademarks MLS®, Multiple Listing Service® and the associated logos are owned by CREA and identify the quality of services provided by real estate professionals who are members of CREA.