



Sherwood Park Alberta

\$525,000

1,964 sq/ft 4 + 1 bedroom two story with double attached garage in Mills Haven! This perfect family home is located on an approximately 56' x 125' lot situated on a quiet street, and features four bedrooms upstairs, a massive master bedroom with three piece ensuite, as well as updated flooring and four piece bath. The fully finished basement has a large rec room, fifth bedroom, and plenty of storage space. The beautiful back yard boasts ample gardening room, brick patio, and a fire pit. Act fast, this lovingly maintained home is definitely a must see! (id:6769)

Bedroom 5 2.99 m X 4.01 m

Recreation room 5.99 m X 8.95 m

Living room 5.64 m X 6.3 m

Dining room 3.29 m X 3.07 m

Kitchen 3.24 m X 3.75 m

Family room 3.39 m X 6.46 m

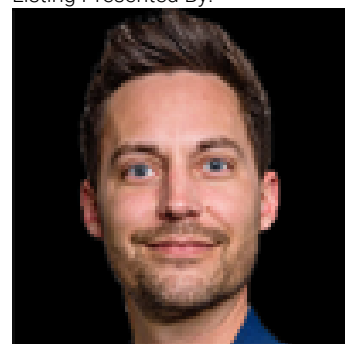
Primary Bedroom 4.23 m X 4.34 m

Bedroom 2 3.25 m X 3.35 m

Bedroom 3 4.12 m X 2.93 m

Bedroom 4 3.08 m X 3.18 m

Listing Presented By:



Originally Listed by:
RE/MAX Real Estate

<http://www.gaglionerealestate.com/>

RE/MAX ELITE

RE/MAX Elite Sherwood Park

#116, 150 Chippewa Rd ,
Edmonton, Alberta,

Phone: 780-984-9399

Fax:

steveleddy@hotmail.com

The property information on this website is derived from the Canadian Real Estate Association's Data Distribution Facility (DDF®). DDF® references real estate listings held by various brokerage firms and franchisees. The accuracy of information is not guaranteed and should be independently verified. The trademarks REALTOR®, REALTORS® and the REALTOR® logo are controlled by The Canadian Real Estate Association (CREA) and identify real estate professionals who are members of CREA. The trademarks MLS®, Multiple Listing Service® and the associated logos are owned by CREA and identify the quality of services provided by real estate professionals who are members of CREA.