

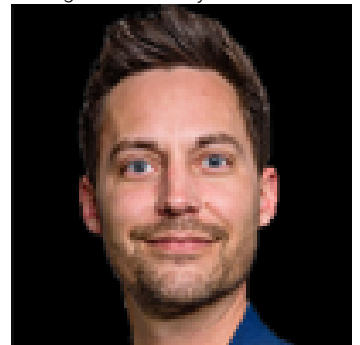


## 10072 164 Street Edmonton AB

\$375,000

Excellent Business Unit at West Edmonton Commerce Park. 1,000 sf on Main Floor and 500 sf on Upper Level (1,515 sf). Presently 3 Offices with Reception/Lobby, Print Room and Washroom on Main Floor. Upper Floor has Board/Meeting Room, Staff Lunch Room and Storage Room. Great Set-Up for just about any Business for Office or Retail Uses. Utilize the present configuration or change out to Your Own use. 2 Parking Stalls in front of Unit with Loads of Parking around the Complex. Quick and Easy Access from Stony Plain Road and 170th Street. Great West End Location. Very Well Maintained Unit. Welcome to Your New Business Location!!

Listing Presented By:



Originally Listed by:  
Royal LePage Noralta Real Estate

[john@theacevedoteam.ca](mailto:john@theacevedoteam.ca)  
<http://www.TheAcevedoTeam.ca>

**RE/MAX ELITE**

**RE/MAX Elite Sherwood Park**

#116, 150 Chippewa Rd ,  
Edmonton, Alberta,

Phone: 780-984-9399

Fax:

[steveleddy@hotmail.com](mailto:steveleddy@hotmail.com)