



Edmonton Alberta

\$160,000

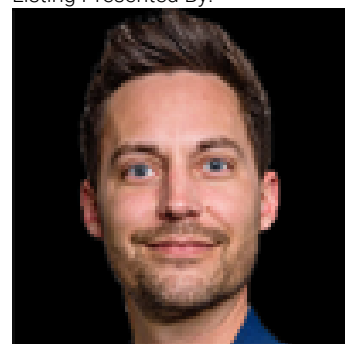
URBAN RETREAT IN THE HEART OF DOWNTOWN EDMONTON -- SOUTH FACING ON THE 10TH FLOOR WITH RIVER VALLEY VIEWS! This one-of-a-kind condo is anything but ordinary -- a truly eccentric & beautifully curated space designed for those who dare to be different. Adjustable pot lighting, open-concept living, stainless steel appliances & high-quality custom finishes throughout create an atmosphere that is as functional as it is inspiring. A protected south facing view ensures your river valley vista is yours to keep. Steps to the river valley trails, golf course, LRT & the downtown core -- location simply does not get better than this. The building delivers exceptional amenities including a gym, swimming pool, large party room, patio deck, free laundry on every floor, oversized bicycle storage & 3 elevators. Any size dogs welcome! Condo fees include all utilities except Wi-Fi. Titled heated underground parking included. All this home needs is YOU! (id:6769)

Living room 4.84 m x Measurements not available Primary Bedroom 3.26 m x Measurements not

Dining room 4.84 m x Measurements not available available

Kitchen 3.51 m x Measurements not available Storage 1.2 m x Measurements not available

Listing Presented By:



Originally Listed by:
Exp Realty

<http://www.davidstjean.com/>

RE/MAX ELITE

RE/MAX Elite Sherwood Park

#116, 150 Chippewa Rd ,
Edmonton, Alberta,

Phone: 780-984-9399

Fax:

steveleddy@hotmail.com

The property information on this website is derived from the Canadian Real Estate Association's Data Distribution Facility (DDF®). DDF® references real estate listings held by various brokerage firms and franchisees. The accuracy of information is not guaranteed and should be independently verified. The trademarks REALTOR®, REALTORS® and the REALTOR® logo are controlled by The Canadian Real Estate Association (CREA) and identify real estate professionals who are members of CREA. The trademarks MLS®, Multiple Listing Service® and the associated logos are owned by CREA and identify the quality of services provided by real estate professionals who are members of CREA.