



Edmonton Alberta

\$199,000

Location, Location! You can have it all! Perfectly situated for university students, first-time home buyers, or young professionals, and just steps from vibrant Whyte Avenue, the University of Alberta, and Edmonton's beautiful river valley and transit. Private and beautiful main floor 2 bedroom and 1 and a half bath condo is PET FREINDLY. The main floor offers a spacious entry way with loads of storage, larger living room brightened with patio doors and access to private patio. The kitchen has white cabinetry to the ceiling and newer appliances, opens to large dining area. Primary bedroom has loads of closet space and 2 pc bath and 2nd bedroom make up this clean well maintained home. (id:6769)

Living room 3.91 m X 5.99 m

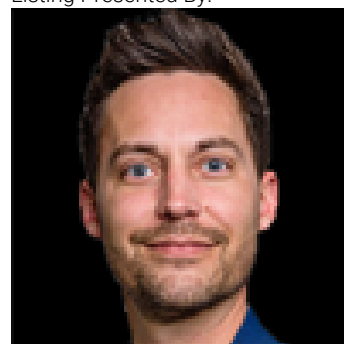
Dining room 2.46 m X 2.55 m

Kitchen 2.4 m X 2.55 m

Primary Bedroom 3.06 m X 3.52 m

Bedroom 2 3.06 m X 3.27 m

Listing Presented By:



Originally Listed by:
MaxWell Progressive

<http://edmonton-realestatepro.com/>

RE/MAX ELITE

RE/MAX Elite Sherwood Park

#116, 150 Chippewa Rd ,
Edmonton, Alberta,

Phone: 780-984-9399

Fax:

steveleddy@hotmail.com