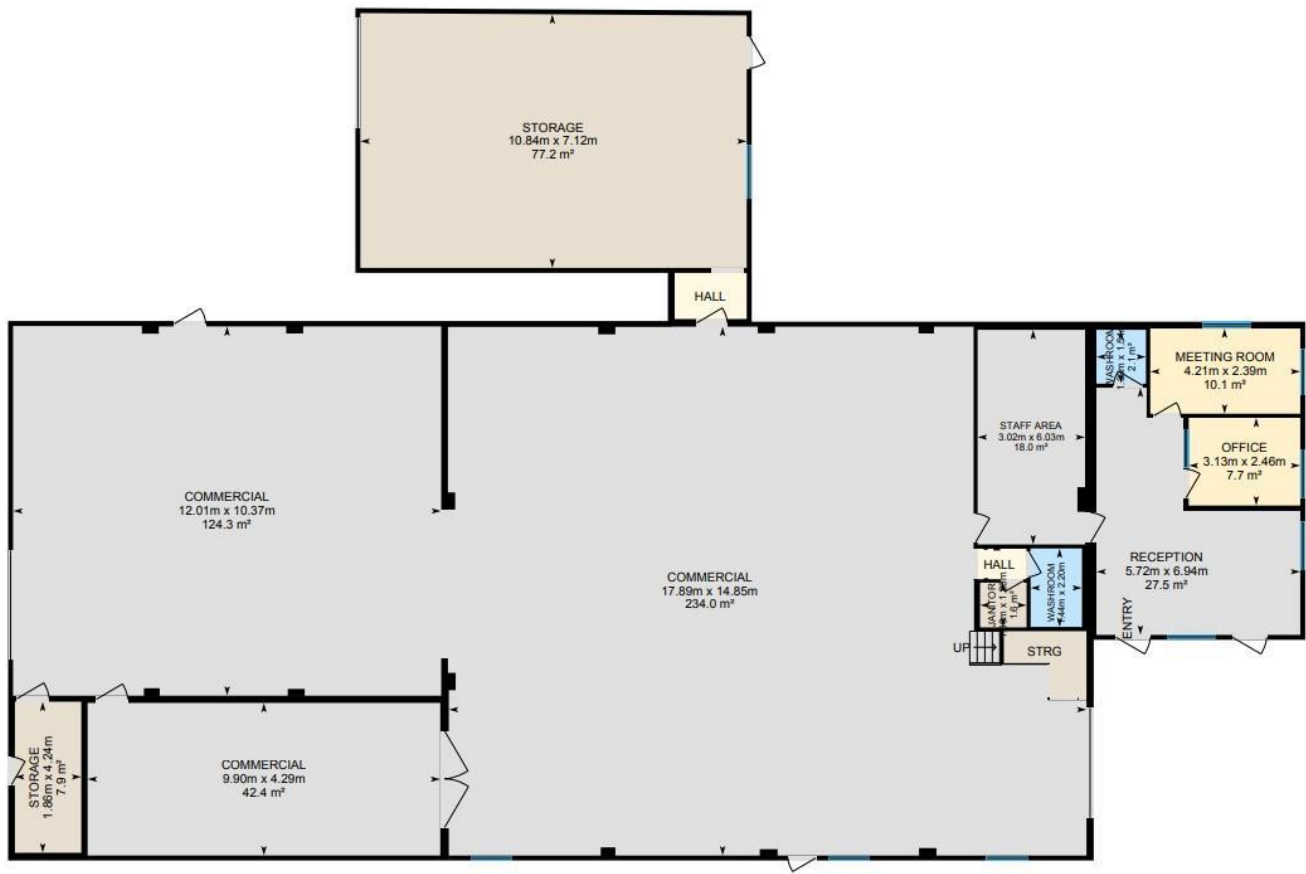


Main Floor Exterior Area 598.29 m²
Interior Area 579.02 m²



Edmonton Alberta

\$1,650,000

Automotive building 6607 sq ft for sale including 3 lots (18,19,20) 50ft x 150ft lots great for redevelopment or continued use, general commercial. Multiple opportunities with combined lot size of 150ft x 150 ft, Approx 22,500 sq ft. which .52 Acre. Commercial General Zone 2.100 CG has permitted use of Multi Unit Housing. Britannia Youngstown neighborhood is going through redevelopment and this land has many uses. Existing Commercial building, concrete block 6607 SQ FT. Phase 1 Environmental has been completed Feb 2007. (id:6769)

Listing Presented By:



Originally Listed by:
Coldwell Banker Mountain Central

<https://weshenderson.agent.cbignite.ca/>

RE/MAX ELITE

RE/MAX Elite Sherwood Park

#116, 150 Chippewa Rd ,
Edmonton, Alberta,

Phone: 780-984-9399

Fax:

steveleddy@hotmail.com

The property information on this website is derived from the Canadian Real Estate Association's Data Distribution Facility (DDF®). DDF® references real estate listings held by various brokerage firms and franchisees. The accuracy of information is not guaranteed and should be independently verified. The trademarks REALTOR®, REALTORS® and the REALTOR® logo are controlled by The Canadian Real Estate Association (CREA) and identify real estate professionals who are members of CREA. The trademarks MLS®, Multiple Listing Service® and the associated logos are owned by CREA and identify the quality of services provided by real estate professionals who are members of CREA.