

# Edmonton Alberta

\$94,900

Welcome to Colonial House! This cozy 1-bedroom, 1-bathroom condo offers comfort, convenience, and unbeatable value. Perfect for first-time buyers or savvy investors, this well-designed floor plan features brand new flooring, a warm wood-burning fireplace, and an abundance of natural light streaming in through the patio doors. A standout feature is the rare in-suite laundry for added ease and privacy. Located steps from Westmount Shopping Centre, schools, and public transit, you'll enjoy quick access to Downtown, NAIT, and MacEwan University. Experience affordable living in a vibrant, connected community--this is one you don't want to miss! (id:6769)

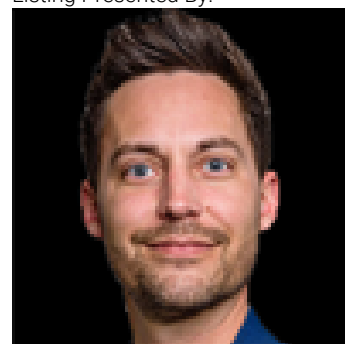
Living room Measurements not available

Dining room Measurements not available

Kitchen Measurements not available

Primary Bedroom Measurements not available

Listing Presented By:



Originally Listed by:  
Logic Realty



**RE/MAX Elite Sherwood Park**

#116, 150 Chippewa Rd ,  
Edmonton, Alberta,

Phone: 780-984-9399

Fax:

steveleddy@hotmail.com

The property information on this website is derived from the Canadian Real Estate Association's Data Distribution Facility (DDF®). DDF® references real estate listings held by various brokerage firms and franchisees. The accuracy of information is not guaranteed and should be independently verified. The trademarks REALTOR®, REALTORS® and the REALTOR® logo are controlled by The Canadian Real Estate Association (CREA) and identify real estate professionals who are members of CREA. The trademarks MLS®, Multiple Listing Service® and the associated logos are owned by CREA and identify the quality of services provided by real estate professionals who are members of CREA.