

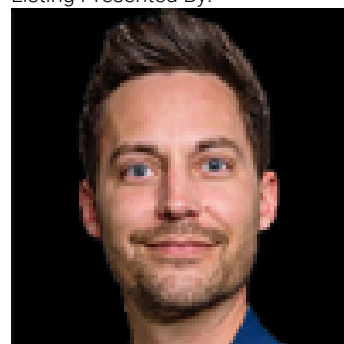


Edmonton Alberta

\$369,900

A rare opportunity to build your dream home in the mature and sought-after community of Beaumaris. This expansive vacant lot offers over 10,000 sq. ft. of space, providing endless possibilities for a custom home design. Surrounded by established homes and tree-lined streets, this property combines the charm of a well-developed neighborhood with the freedom of building new. Ideally located close to schools, shopping, parks, public transit, and all major amenities, this is a truly exceptional find in a prime location. (id:6769)

Listing Presented By:



Originally Listed by:
Royal LePage Arteam Realty

<http://www.wallykarout.com/>

RE/MAX ELITE

RE/MAX Elite Sherwood Park

#116, 150 Chippewa Rd ,
Edmonton, Alberta,

Phone: 780-984-9399

Fax:

steveleddy@hotmail.com

The property information on this website is derived from the Canadian Real Estate Association's Data Distribution Facility (DDF®). DDF® references real estate listings held by various brokerage firms and franchisees. The accuracy of information is not guaranteed and should be independently verified. The trademarks REALTOR®, REALTORS® and the REALTOR® logo are controlled by The Canadian Real Estate Association (CREA) and identify real estate professionals who are members of CREA. The trademarks MLS®, Multiple Listing Service® and the associated logos are owned by CREA and identify the quality of services provided by real estate professionals who are members of CREA.