



## Edmonton Alberta

\$100,000

Great investment opportunity or move-in-ready condo in the heart of the city! This two-bedroom unit features one full bathroom with plumbing already in place for a second bath in the primary suite. Enjoy an open-concept layout with a recently renovated kitchen and bathroom. The condo includes one designated parking stall plus ample street parking. Ideally located on a quiet, tree-lined street just a short walk to Rogers Place, Grant MacEwan University, shops, restaurants, and downtown amenities. An excellent investment property that's easy to rent, or a perfect place to call home. (id:6769)

**Living room** Measurements not available

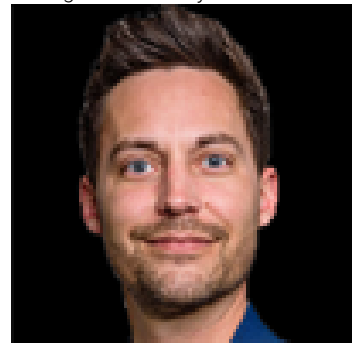
**Dining room** Measurements not available

**Kitchen** Measurements not available

**Primary Bedroom** Measurements not available

**Bedroom 2** Measurements not available

Listing Presented By:



Originally Listed by:  
NOW Real Estate Group



**RE/MAX Elite Sherwood Park**

#116, 150 Chippewa Rd ,  
Edmonton, Alberta,

Phone: 780-984-9399

Fax:

steveleddy@hotmail.com

The property information on this website is derived from the Canadian Real Estate Association's Data Distribution Facility (DDF®). DDF® references real estate listings held by various brokerage firms and franchisees. The accuracy of information is not guaranteed and should be independently verified. The trademarks REALTOR®, REALTORS® and the REALTOR® logo are controlled by The Canadian Real Estate Association (CREA) and identify real estate professionals who are members of CREA. The trademarks MLS®, Multiple Listing Service® and the associated logos are owned by CREA and identify the quality of services provided by real estate professionals who are members of CREA.