

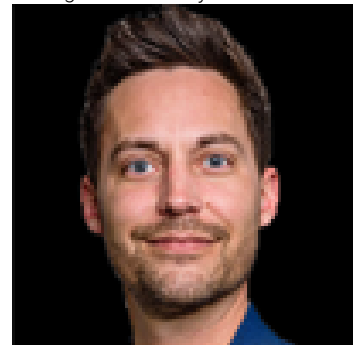


## 5124 TWP RD 554 Rural Lac Ste. Anne County AB

\$375,000

Introducing a brand new two-bedroom bungalow, crafted by Fox Maple Homes, nestled on a 1-acre lot complete with an RV hookup and a charming two-room cabin. This thoughtfully designed home features two spacious bedrooms, a full bath with ample cabinetry, and an open floor plan with a vaulted ceiling in the kitchen and living area. Kitchen boast of custom cabinetry and quartz countertops. The well-appointed kitchen includes a generous pantry. Oversized patio door open to a large 12X30 covered deck, perfect for relaxing while overlooking the private backyard and firepit area. Located just a short walk from the lake and boat launch, this property offers easy access for kayaking or paddle boarding, fishing and boating.. Ideal for year-round living or a recreational retreat, this home is ready for you to enjoy.

Listing Presented By:



Originally Listed by:  
Century 21 Masters

leannknysh@gmail.com  
<http://www.leannknysh.ca>

**RE/MAX ELITE**

**RE/MAX Elite Sherwood Park**

#116, 150 Chippewa Rd ,  
Edmonton, Alberta,

Phone: 780-984-9399

Fax:

steveleddy@hotmail.com