

## Edmonton Alberta

\$124,900

Move-in ready one-bedroom condo located in the heart of Strathcona, just steps from the River Valley, White Avenue, and the University of Alberta. This bright unit features an open living area, brand new vinyl plank flooring, fresh paint throughout, and a renovated bathroom with a refinished tub, new vanity, and toilet. The kitchen includes a brand new stove and dishwasher, and there's a large in-suite storage room for added convenience. Shared laundry is available on the second and third floors, and the unit includes a designated parking stall. An ideal investment opportunity or perfect option for university students seeking a central and walkable location close to shopping, restaurants, and transit. (id:6769)

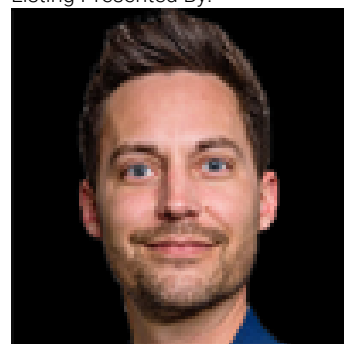
Living room 5.16 m X 3.43 m

Kitchen 3.75 m X 2.9 m

Primary Bedroom 3.72 m X 3.28 m

Storage 4.01 m X 1.12 m

Listing Presented By:



Originally Listed by:  
Blackmore Real Estate

**RE/MAX ELITE**

**RE/MAX Elite Sherwood Park**

#116, 150 Chippewa Rd ,  
Edmonton, Alberta,

Phone: 780-984-9399

Fax:

steveleddy@hotmail.com