

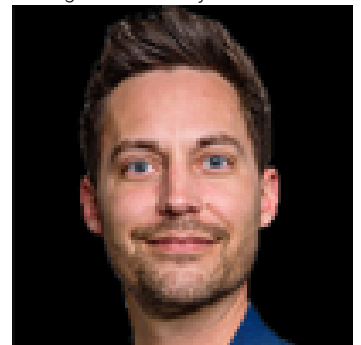


Edmonton Alberta

\$695,000

o Two contiguous office/industrial condos available on the city's west end
o Full interior renovation with new construction completed in 2015
o Comprised of 2,880 sq. ft. of main floor space (approx. 1,050 sq ft office) plus additional 1,500 sq. ft. of fully developed second floor totaling 4,400 sq. ft.
o Air conditioned
o Eight assigned parking stalls
o Grade loading door
o Fully sprinklered (id:6769)

Listing Presented By:



Originally Listed by:
NAI Commercial Real Estate Inc

RE/MAX ELITE

RE/MAX Elite Sherwood Park

#116, 150 Chippewa Rd ,
Edmonton, Alberta,

Phone: 780-984-9399

Fax:

steveleddy@hotmail.com

The property information on this website is derived from the Canadian Real Estate Association's Data Distribution Facility (DDF®). DDF® references real estate listings held by various brokerage firms and franchisees. The accuracy of information is not guaranteed and should be independently verified. The trademarks REALTOR®, REALTORS® and the REALTOR® logo are controlled by The Canadian Real Estate Association (CREA) and identify real estate professionals who are members of CREA. The trademarks MLS®, Multiple Listing Service® and the associated logos are owned by CREA and identify the quality of services provided by real estate professionals who are members of CREA.