



Edmonton Alberta

\$350,000

Welcome Home! This stylish and well-maintained townhome is in the desirable community of Crystallina! Offering modern finishes and an open-concept layout. BRIGHT main living area features large windows, contemporary flooring, and a spacious kitchen complete with quartz countertops, island perfect for entertaining, ample cabinet space and walk in pantry. Main floor laundry. In the evenings enjoy the beautiful sun-set on the SouthWest Facing Balcony overlooking the courtyard. Upstairs you'll find a comfortable primary retreat and ensuite, two additional bedrooms and main bathroom. Enjoy the added benefit of a Double attached garage, low-maintenance living, and easy access to walking trails, lakes, parks, schools, shopping, and major commuter routes. Located in one of north Edmonton's fastest-growing communities, this move-in-ready home offers the perfect blend of comfort, style, and convenience. (id:6769)

Living room 4.81 m X 3.97 m

Dining room 2.73 m X 2.28 m

Kitchen 3.88 m X 3.32 m

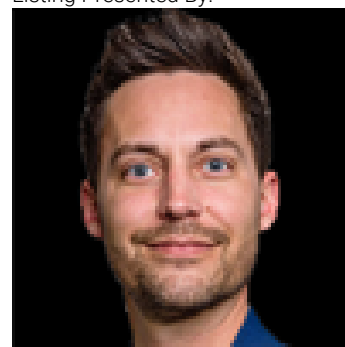
Laundry room Measurements not available

Primary Bedroom 3.66 m X 3.49 m

Bedroom 2 3.05 m X 2.86 m

Bedroom 3 2.96 m X 2.86 m

Listing Presented By:



Originally Listed by:
Sterling Real Estate

RE/MAX ELITE

RE/MAX Elite Sherwood Park

#116, 150 Chippewa Rd ,
Edmonton, Alberta,

Phone: 780-984-9399

Fax:

steveleddy@hotmail.com

The property information on this website is derived from the Canadian Real Estate Association's Data Distribution Facility (DDF®). DDF® references real estate listings held by various brokerage firms and franchisees. The accuracy of information is not guaranteed and should be independently verified. The trademarks REALTOR®, REALTORS® and the REALTOR® logo are controlled by The Canadian Real Estate Association (CREA) and identify real estate professionals who are members of CREA. The trademarks MLS®, Multiple Listing Service® and the associated logos are owned by CREA and identify the quality of services provided by real estate professionals who are members of CREA.