



Sherwood Park Alberta

\$235,000

Welcome to this well-maintained 3-bedroom, 1.5-bath townhouse condo in the desirable community of Strathcona Village, Sherwood Park. Featuring warm earth-tone finishes, light maple cabinetry, and convenient main-floor laundry, this home offers both comfort and functionality. The spacious primary bedroom includes a walk-in closet and private ensuite access. Enjoy parking directly in front of the unit along with access to beautifully maintained common green space. Ideally located within walking distance to shopping, restaurants, parks, public transportation, and everyday amenities. A fantastic opportunity for first-time buyers, investors, or anyone looking for affordable, low-maintenance living. (id:6769)

Laundry room 2.32 × 1.82

Living room 3.91 × 3.63

Dining room 3.42 × 2.88

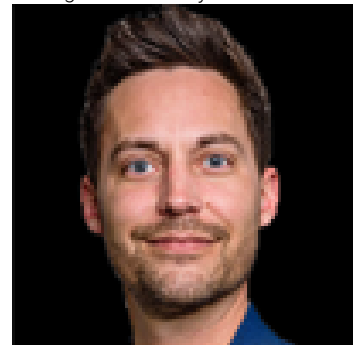
Kitchen 2.94 × 2.81

Primary Bedroom 3.90 × 3.03

Bedroom 2 2.88 × 2.70

Bedroom 3 3.35 × 2.83

Listing Presented By:



Originally Listed by:
Exp Realty

RE/MAX ELITE

RE/MAX Elite Sherwood Park

#116, 150 Chippewa Rd ,
Edmonton, Alberta,

Phone: 780-984-9399

Fax:

steveleddy@hotmail.com

The property information on this website is derived from the Canadian Real Estate Association's Data Distribution Facility (DDF®). DDF® references real estate listings held by various brokerage firms and franchisees. The accuracy of information is not guaranteed and should be independently verified. The trademarks REALTOR®, REALTORS® and the REALTOR® logo are controlled by The Canadian Real Estate Association (CREA) and identify real estate professionals who are members of CREA. The trademarks MLS®, Multiple Listing Service® and the associated logos are owned by CREA and identify the quality of services provided by real estate professionals who are members of CREA.