



Sherwood Park Alberta

\$489,702

~!WELCOME HOME!~ Opportunity knocks in The Ridge! This bi-level has great bones, a functional layout, and incredible potential for someone willing to roll up their sleeves a little. The main floor features a bright open concept design with large windows flooding the home with natural light, spacious living room, large island kitchen with tons of oak cabinetry, plus 2 bedrooms upstairs including a generous primary suite with walk-in closet and full ensuite. The F/F basement offers a massive family room anchored by a brick-faced corner gas fireplace, an additional bedroom, full bathroom, and plenty of storage space. Double attached insulated HEATED garage . Outside you'll find a private fenced yard with mature trees, large deck, and room to refresh the landscaping into something truly special. There was a leak previously in the basement bathroom that has already been identified, with remaining repairs mainly consisting of drywall replacement and finishing work. (id:6769)

Family room Measurements not available

Den Measurements not available

Bedroom 3 Measurements not available

Office Measurements not available

Recreation room Measurements not available

Living room Measurements not available

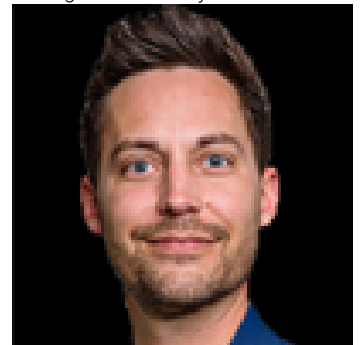
Dining room Measurements not available

Kitchen Measurements not available

Primary Bedroom Measurements not available

Bedroom 2 Measurements not available

Listing Presented By:



Originally Listed by:
RE/MAX Elite

<http://www.macmillanteam.com/>



RE/MAX Elite Sherwood Park

#116, 150 Chippewa Rd ,
Edmonton, Alberta,

Phone: 780-984-9399

Fax:

steveleddy@hotmail.com

The property information on this website is derived from the Canadian Real Estate Association's Data Distribution Facility (DDF®). DDF® references real estate listings held by various brokerage firms and franchisees. The accuracy of information is not guaranteed and should be independently verified. The trademarks REALTOR®, REALTORS® and the REALTOR® logo are controlled by The Canadian Real Estate Association (CREA) and identify real estate professionals who are members of CREA. The trademarks MLS®, Multiple Listing Service® and the associated logos are owned by CREA and identify the quality of services provided by real estate professionals who are members of CREA.