



Edmonton Alberta

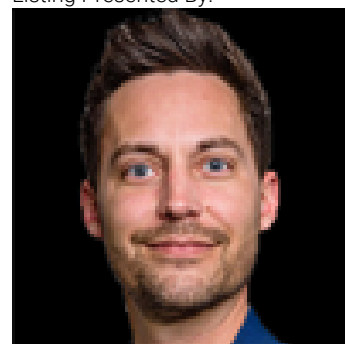
\$390,000

Location, lot, and layout--this Rundle Heights bungalow checks all the boxes. Over 1,600 sq ft on the main floor with 3 bedrooms, 2 full baths, and a partially developed basement ready for your finishing touches. The fully fenced yard and oversized double-detached garage with loft area add functionality and value. But the real draw? An unmatched recreation corridor right at your doorstep! Steps to Rundle Park with its trails, 18-hole par-3 executive golf course, tennis courts, and disc golf. Minutes to the ACT Aquatic & Recreation Centre, Rundle Family Centre, Sunridge Ski Area, and Strathcona Science Provincial Park. Year-round outdoor living for every age and interest, all with easy access to the North Saskatchewan River valley. Established east Edmonton neighbourhood with strong fundamentals. Property sold in present condition. Schedule A required with all offers. (id:6769)

Family room Measurements not available
Living room Measurements not available
Dining room Measurements not available
Kitchen Measurements not available

Primary Bedroom Measurements not available
Bedroom 2 Measurements not available
Bedroom 3 Measurements not available

Listing Presented By:



Originally Listed by:
Signature Edge Realty International
<http://www.teamchisholm.ca/>



RE/MAX Elite Sherwood Park

#116, 150 Chippewa Rd ,
Edmonton, Alberta,

Phone: 780-984-9399
Fax:
steveleddy@hotmail.com

The property information on this website is derived from the Canadian Real Estate Association's Data Distribution Facility (DDF®). DDF® references real estate listings held by various brokerage firms and franchisees. The accuracy of information is not guaranteed and should be independently verified. The trademarks REALTOR®, REALTORS® and the REALTOR® logo are controlled by The Canadian Real Estate Association (CREA) and identify real estate professionals who are members of CREA. The trademarks MLS®, Multiple Listing Service® and the associated logos are owned by CREA and identify the quality of services provided by real estate professionals who are members of CREA.