



Edmonton Alberta

\$699,999

Welcome to this stunning 2,308 sq ft home, crafted for modern living with elevated style. This spacious 3-bedroom layout is designed for both family life and entertaining. The main floor features a bright den, full bathroom, and a functional mudroom off the garage for everyday convenience. At the heart of the home is a chef-inspired kitchen with quartz countertops and generous cabinetry, flowing into an impressive open-to-above great room--perfect for hosting and cozy evenings alike. Upstairs, unwind in the vaulted-ceiling primary retreat with a spa-like 5-piece ensuite offering dual sinks, a soaker tub, and separate shower. The additional bedrooms are spacious and filled with natural light. Optional legal basement suite with separate side entrance provides added flexibility and income potential. Backing onto a pond and walking path for peaceful summer walks. Immediate possession available. (id:6769)

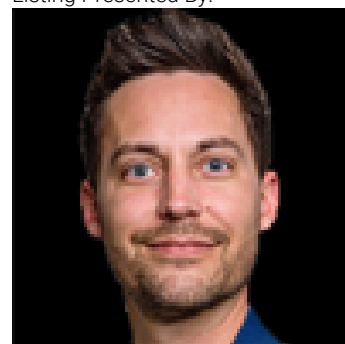
Den Measurements not available

Primary Bedroom Measurements not available

Bedroom 2 Measurements not available

Bedroom 3 Measurements not available

Listing Presented By:



Originally Listed by:
Exp Realty

<https://teamlegacycanada.com/>

RE/MAX ELITE

RE/MAX Elite Sherwood Park

#116, 150 Chippewa Rd ,
Edmonton, Alberta,

Phone: 780-984-9399

Fax:

steveleddy@hotmail.com

The property information on this website is derived from the Canadian Real Estate Association's Data Distribution Facility (DDF®). DDF® references real estate listings held by various brokerage firms and franchisees. The accuracy of information is not guaranteed and should be independently verified. The trademarks REALTOR®, REALTORS® and the REALTOR® logo are controlled by The Canadian Real Estate Association (CREA) and identify real estate professionals who are members of CREA. The trademarks MLS®, Multiple Listing Service® and the associated logos are owned by CREA and identify the quality of services provided by real estate professionals who are members of CREA.