



Edmonton Alberta

\$475,000

Great charming brick Home Built in 1910, Unique and tastefully decorated with a spacious living and dining rooms, 9 FT ceiling, complete with pocket doors. Kitchen has a formal pantry, has two metal door accesses. A Gas Fireplace, main floor Den. Good size foyer with open stairway adds charm to an older character home. Hardwood floor, all windows have been upgraded. The House now has a brand new boiler system and hot water tank. All bedrooms have walk in closets. The Basement is developed with 2 good size bedrooms. Price included vacant lot next door, 10856 93 ST with separate Title. Plan is 1710U, Block 23, Lot 5. Over size single 16x22 Garage is fully insulated, wired. Spacious concrete deck. Close to all Amenities: Schools, transportation, shopping, Hockey Arena, Good location. (id:6769)

Bedroom 5 3.98 m X 3.12 m

Bedroom 6 3 m X 2.81 m

Living room 4.37 m X 3.53 m

Dining room 4.51 m X 4.72 m

Kitchen 4.22 m X 3.12 m

Den 2.77 m X 2.84 m

Breakfast 1.83 m X 1.07 m

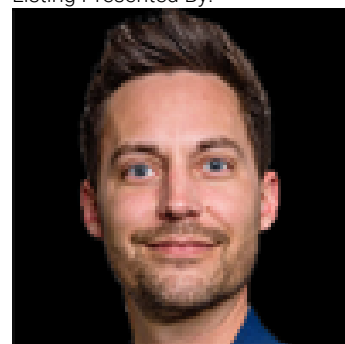
Primary Bedroom 4.22 m X 3.59 m

Bedroom 2 3.24 m X 2.89 m

Bedroom 3 3.62 m X 3.58 m

Bedroom 4 4.18 m X 2.63 m

Listing Presented By:



Originally Listed by:
Royal LePage Noralta Real Estate

<http://zisinrealestate.com/>

RE/MAX ELITE

RE/MAX Elite Sherwood Park

#116, 150 Chippewa Rd ,
Edmonton, Alberta,

Phone: 780-984-9399

Fax:

steveleddy@hotmail.com

The property information on this website is derived from the Canadian Real Estate Association's Data Distribution Facility (DDF®). DDF® references real estate listings held by various brokerage firms and franchisees. The accuracy of information is not guaranteed and should be independently verified. The trademarks REALTOR®, REALTORS® and the REALTOR® logo are controlled by The Canadian Real Estate Association (CREA) and identify real estate professionals who are members of CREA. The trademarks MLS®, Multiple Listing Service® and the associated logos are owned by CREA and identify the quality of services provided by real estate professionals who are members of CREA.