



## Edmonton Alberta

\$2,290,000

Brand new 4 plex on a corner lot in North Glenora with 4 legal basement suites and 4 single car garages. The 4 spacious upper units offers 3 bedrooms and 2.5 bathroom welcomed by a modern open concept. Legal basement suites includes one bed room, living area, 1 full bath separate kitchen and Laundry with separate entrances. Designed for high rental income or extended family living. Walking distance from west mount shopping mall, schools and transit. Few minutes away from university, river valley trails, downtown arena and WEM. Each unit is approximately 1165 sqft above grade and 600 Sqft in basement as per plans. Under construction, tentative of possession is May 2026. (id:6769)

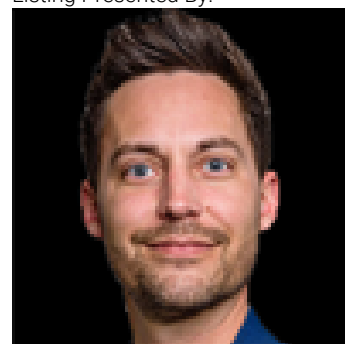
Bedroom 4 Measurements not available

Bedroom 2 Measurements not available

Primary Bedroom Measurements not available

Bedroom 3 Measurements not available

Listing Presented By:



Originally Listed by:  
Venus Realty

**RE/MAX ELITE**

**RE/MAX Elite Sherwood Park**

#116, 150 Chippewa Rd ,  
Edmonton, Alberta,

Phone: 780-984-9399

Fax:

steveleddy@hotmail.com

The property information on this website is derived from the Canadian Real Estate Association's Data Distribution Facility (DDF®). DDF® references real estate listings held by various brokerage firms and franchisees. The accuracy of information is not guaranteed and should be independently verified. The trademarks REALTOR®, REALTORS® and the REALTOR® logo are controlled by The Canadian Real Estate Association (CREA) and identify real estate professionals who are members of CREA. The trademarks MLS®, Multiple Listing Service® and the associated logos are owned by CREA and identify the quality of services provided by real estate professionals who are members of CREA.