



Sherwood Park Alberta

\$239,900

Welcome to this 1164sq ft 2-storey in Broadmoor Lakes offering 3 bedrooms and 2 bathrooms. As you enter the main level there is a large living room with dining area, bright kitchen with island and 2pc bath. The upper level offers 3 large bedrooms, 4pc bath. The Primary bedroom has jack and Jill closets. The basement has a laundry room, mechanical area and framed with electrical. The East-facing backyard is fully-fenced, patio and grass area. Updated Furnace (2021) and 2 parking stalls. Close to schools, shopping, public transit. Quick possession available! (id:6769)

Living room 3.98 m X 5.98 m

Dining room Measurements not available

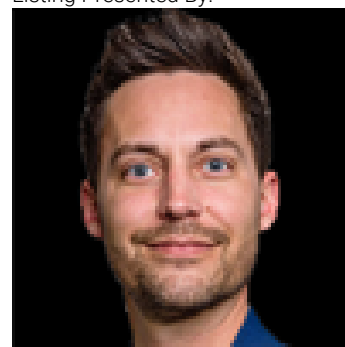
Kitchen 3.62 m X 3.48 m

Primary Bedroom 4.55 m X 3.48 m

Bedroom 2 2.42 m X 4.02 m

Bedroom 3 2.72 m X 2.81 m

Listing Presented By:



Originally Listed by:
Royal Lepage Arteam Realty

<https://crystalwalline.ca/>



RE/MAX Elite Sherwood Park

#116, 150 Chippewa Rd ,
Edmonton, Alberta,

Phone: 780-984-9399

Fax:

steveleddy@hotmail.com

The property information on this website is derived from the Canadian Real Estate Association's Data Distribution Facility (DDF®). DDF® references real estate listings held by various brokerage firms and franchisees. The accuracy of information is not guaranteed and should be independently verified. The trademarks REALTOR®, REALTORS® and the REALTOR® logo are controlled by The Canadian Real Estate Association (CREA) and identify real estate professionals who are members of CREA. The trademarks MLS®, Multiple Listing Service® and the associated logos are owned by CREA and identify the quality of services provided by real estate professionals who are members of CREA.