

MEDIUM SCALE RESIDENTIAL RMH16

50' x 140'

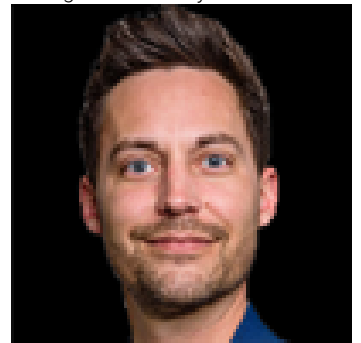


Edmonton Alberta

\$330,000

REDEVELOPMENT ALERT in Central McDougall!! 50'x140' Lot Medium Scale Residential RM H16 zoning, right on 109 Street. Option for 3 Lots Side x Side for a total frontage of 150'x140' HUGE potential for a low rise apartment building, 4plexes or skinnies - 24 units minimum! Great potential for CMHC MLI products in this location. This location is excellent for future redevelopment, close to amenities, public transit, LRT, NAIT, minutes from downtown & on a street where other redevelopment is already happening & more being planned all the time. Take advantage of the City encouraging higher density & development & secure your next project! Neighbouring lots 11015-109 St & 11021-109 St also for sale (id:6769)

Listing Presented By:



Originally Listed by:
RE/MAX River City

<http://www.metroyeg.ca/>



RE/MAX Elite Sherwood Park

#116, 150 Chippewa Rd ,
Edmonton, Alberta,

Phone: 780-984-9399

Fax:

steveleddy@hotmail.com

The property information on this website is derived from the Canadian Real Estate Association's Data Distribution Facility (DDF®). DDF® references real estate listings held by various brokerage firms and franchisees. The accuracy of information is not guaranteed and should be independently verified. The trademarks REALTOR®, REALTORS® and the REALTOR® logo are controlled by The Canadian Real Estate Association (CREA) and identify real estate professionals who are members of CREA. The trademarks MLS®, Multiple Listing Service® and the associated logos are owned by CREA and identify the quality of services provided by real estate professionals who are members of CREA.