



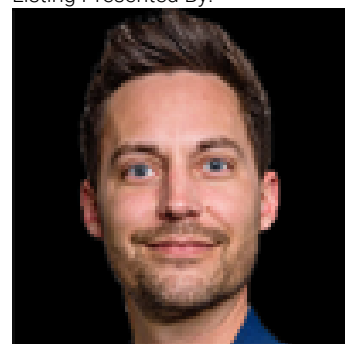
## Rural Westlock County Alberta

\$99,900

Opportunity awaits on this 2.45-acre parcel ideally located along paved Highway 651. Offering excellent access and a desirable rural setting, this property is perfectly positioned near several lakes, the thriving community of Busby, and just 40 minutes from St. Albert and Edmonton. Property offers plenty of potential for the right buyer willing to roll up their sleeves. The site requires considerable cleanup but features several existing outbuildings, including a 20' x 26' garage/shop with an older concrete floor. Services include power to the property and an older bored well. Natural gas is nearby, although it is not currently connected to the property. Whether you're looking for a future homesite, a weekend project/getaway, or an acreage with room to grow, this well-located parcel offers great value and endless possibilities in a convenient rural location.

(id:6769)

Listing Presented By:



Originally Listed by:  
Royal Lepage Town & Country  
Realty

<http://www.townandcountryrealty.ca/>

**RE/MAX ELITE**

**RE/MAX Elite Sherwood Park**

#116, 150 Chippewa Rd ,  
Edmonton, Alberta,

Phone: 780-984-9399

Fax:

steveleddy@hotmail.com

The property information on this website is derived from the Canadian Real Estate Association's Data Distribution Facility (DDF®). DDF® references real estate listings held by various brokerage firms and franchisees. The accuracy of information is not guaranteed and should be independently verified. The trademarks REALTOR®, REALTORS® and the REALTOR® logo are controlled by The Canadian Real Estate Association (CREA) and identify real estate professionals who are members of CREA. The trademarks MLS®, Multiple Listing Service® and the associated logos are owned by CREA and identify the quality of services provided by real estate professionals who are members of CREA.