



Sherwood Park Alberta

\$169,900

2 TITLED PARKING STALLS! Centrally located in Sherwood Park, this 1-bedroom condo with a den backs onto a private greenspace for added peace and privacy. Freshly painted, the stylish kitchen features rich dark cabinetry, granite countertops, and tile flooring. The bright living room offers large windows and patio doors leading to a quiet balcony retreat. The 4-piece bath also showcases granite and tile. Durable laminate flooring runs throughout the living room and bedroom--no carpet! The den includes a networking outlet and works perfectly as a home office or extra storage. Enjoy the convenience of IN-SUITE LAUNDRY and access to the building's fitness room. Walking distance to shopping, restaurants, and transit, plus trails, parks, and playgrounds nearby. A fantastic opportunity in Lakeland Ridge! (id:6769)

Living room Measurements not available

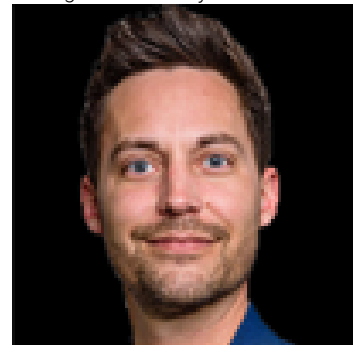
Kitchen Measurements not available

Primary Bedroom Measurements not available

Laundry room Measurements not available

Office Measurements not available

Listing Presented By:



Originally Listed by:
Century 21 All Stars Realty Ltd

<http://www.bradwarkentin.com/>



RE/MAX Elite Sherwood Park

#116, 150 Chippewa Rd ,
Edmonton, Alberta,

Phone: 780-984-9399

Fax:

steveleddy@hotmail.com

The property information on this website is derived from the Canadian Real Estate Association's Data Distribution Facility (DDF®). DDF® references real estate listings held by various brokerage firms and franchisees. The accuracy of information is not guaranteed and should be independently verified. The trademarks REALTOR®, REALTORS® and the REALTOR® logo are controlled by The Canadian Real Estate Association (CREA) and identify real estate professionals who are members of CREA. The trademarks MLS®, Multiple Listing Service® and the associated logos are owned by CREA and identify the quality of services provided by real estate professionals who are members of CREA.