



## Edmonton Alberta

\$595,000

Enjoy the morning sunrise on this RAVINE FACING unit and walk straight onto the fenced grass property from your patio. The Bloom floorplan offers 1,248 sq ft (building plan 1,310 sq ft) of luxury! HIGH END FINISHING is evident as you enter the open concept 2 bedroom, 2 bathroom IMMACULATE home. Features include soaring 10' ceilings, quartz countertops, vinyl plank flooring throughout, GOURMET KITCHEN with an abundance of cabinets and slide out drawers, stainless steel appliances (including a gas cooktop), power Hunter Douglas DuoLite blinds, spa like ensuite with glass enclosed walk in shower, massive primary walk in closet. 1 titled oversized underground parking stall w/storage cage and 1 titled surface stall are included! This fabulous LIFESTYLE PROPERTY is guaranteed to impress along with its UNPARALLELED AMENITIES. Don't miss out on this unit in the highly sought after Edge at Larch Park! (id:6769)

Living room 2.69 m X 1.67 m

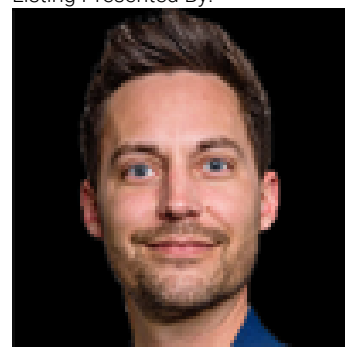
Kitchen 5.42 m X 5.47 m

Primary Bedroom 4.14 m X 4.04 m

Bedroom 2 4.19 m X 3.05 m

Laundry room 2.69 m X 1.68 m

Listing Presented By:



Originally Listed by:  
MaxWell Progressive

<http://www.brantpylpa.com/>

**RE/MAX ELITE**

**RE/MAX Elite Sherwood Park**

#116, 150 Chippewa Rd ,  
Edmonton, Alberta,

Phone: 780-984-9399

Fax:

steveleddy@hotmail.com