



Edmonton Alberta

\$130,900

Fantastic opportunity to own this bright and spacious 1 Bedroom + Den condo in the well-managed Park Place Boulevard. Conveniently located close to grocery stores, Commonwealth Recreation Centre, Rogers Place, restaurants, shopping, and everyday amenities, with the LRT just steps away and quick access to Wayne Gretzky Drive. This secure, newer building features elevator access and ample visitor parking. Inside, you'll find a functional layout with excellent natural light, 2 full bathrooms, in-suite laundry, and a walk-through closet connecting the primary bedroom to the ensuite. The versatile den is currently used as a second bedroom, offering flexibility for guests, a home office, or additional living space. Enjoy the large southeast-facing balcony and the convenience of dual tandem parking stalls. An excellent option for first-time buyers, investors, or anyone seeking great value in a central location. (id:6769)

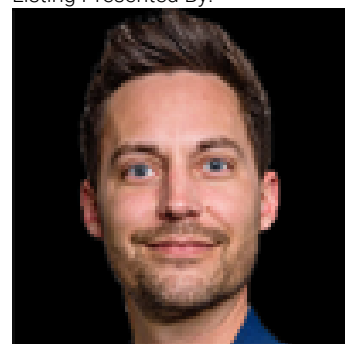
Living room 5.41 m X 4.52 m

Den 2.8 m X 3.38 m

Kitchen 2.97 m X 2.6 m

Primary Bedroom 4.5 m X 4.19 m

Listing Presented By:



Originally Listed by:
Sable Realty

RE/MAX ELITE

RE/MAX Elite Sherwood Park

#116, 150 Chippewa Rd ,
Edmonton, Alberta,

Phone: 780-984-9399

Fax:

steveleddy@hotmail.com

The property information on this website is derived from the Canadian Real Estate Association's Data Distribution Facility (DDF®). DDF® references real estate listings held by various brokerage firms and franchisees. The accuracy of information is not guaranteed and should be independently verified. The trademarks REALTOR®, REALTORS® and the REALTOR® logo are controlled by The Canadian Real Estate Association (CREA) and identify real estate professionals who are members of CREA. The trademarks MLS®, Multiple Listing Service® and the associated logos are owned by CREA and identify the quality of services provided by real estate professionals who are members of CREA.