



Edmonton Alberta

\$460,000

Discover the perfect family sanctuary nestled on a quiet cul-de-sac with NO REAR NEIGHBORS, where privacy meets convenience in Edmonton's sought-after Prince Rupert community. This beautifully updated home offers everything a growing family needs, starting with a BRAND NEW ROOF for complete peace of mind and three flexible upstairs rooms perfect for bedrooms, nursery, home office, or playroom as your family evolves. The main floor features a large open seating area ideal for family gatherings and entertaining, while the updated master bathroom provides your personal retreat after busy family days. Step into your backyard oasis featuring a stunning pond feature that creates a magical space where children can explore nature and parents can unwind in tranquil privacy. The peaceful cul-de-sac setting means safe streets for kids to play, while the mature, tree-lined Prince Rupert neighborhood offers Airways Park with playgrounds, sports fields, and skating rink just minutes away. (id:6769)

Living room 4.8 m X 3.6 m

Dining room 3.9 m X 2.5 m

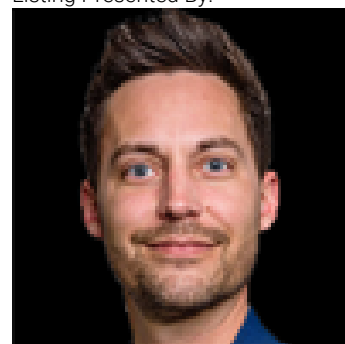
Kitchen 3.2 m X 3.1 m

Primary Bedroom 3.9 m X 3.4 m

Bedroom 2 3.2 m X 2.7 m

Bedroom 3 3 m X 2.9 m

Listing Presented By:



Originally Listed by:
Real Broker

<http://yegforme.ca/>



RE/MAX Elite Sherwood Park

#116, 150 Chippewa Rd ,
Edmonton, Alberta,

Phone: 780-984-9399

Fax:

steveleddy@hotmail.com

The property information on this website is derived from the Canadian Real Estate Association's Data Distribution Facility (DDF®). DDF® references real estate listings held by various brokerage firms and franchisees. The accuracy of information is not guaranteed and should be independently verified. The trademarks REALTOR®, REALTORS® and the REALTOR® logo are controlled by The Canadian Real Estate Association (CREA) and identify real estate professionals who are members of CREA. The trademarks MLS®, Multiple Listing Service® and the associated logos are owned by CREA and identify the quality of services provided by real estate professionals who are members of CREA.