



Edmonton Alberta

\$589,000

FULLY RENOVATED 4-level split in the mature, tree-lined community of Malmö Plains - original neighbourhood charm with the interior of a brand-new home. 3 bedrooms up plus a 4th on the lower level, and 3 FULL BATHS including a luxurious ensuite off the primary. Open-concept main with fresh designer paint, vinyl plank flooring, and a bright island kitchen with new stainless appliances and garburator. Dining and living areas flow off the kitchen; carpeted lower level and ceramic-tiled baths. Electric blind in the living room; cordless sheer/blackout honeycomb blinds upstairs and main for insulation and light control. Full smart home: keyless entry, remote thermostat, 3 cameras, CO2/smoke/flood/temp sensors. CENTRAL A/C, gas fireplace, south-facing fenced backyard on a treed lot. Detached double garage, newly paved alley. Minutes to Whitemud, Southgate, the U of A, and top schools. MOVE-IN READY. (id:6769)

Recreation room 6.15 m X 3.76 m

Family room 5.22 m X 5.18 m

Bedroom 4 2.8 m X 3.33 m

Living room 5.81 m X 3.98 m

Dining room 2.61 m X 2.78 m

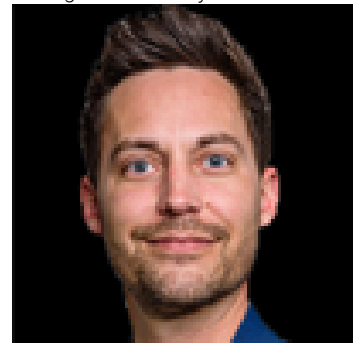
Kitchen 3.8 m X 3.98 m

Primary Bedroom 3.69 m X 3.8 m

Bedroom 2 2.78 m X 4.41 m

Bedroom 3 2.52 m X 3.33 m

Listing Presented By:



Originally Listed by:
NOW Real Estate Group

<http://www.garryrogerson.com/>

RE/MAX ELITE

RE/MAX Elite Sherwood Park

#116, 150 Chippewa Rd,
Edmonton, Alberta,

Phone: 780-984-9399

Fax:

steveleddy@hotmail.com

The property information on this website is derived from the Canadian Real Estate Association's Data Distribution Facility (DDF®). DDF® references real estate listings held by various brokerage firms and franchisees. The accuracy of information is not guaranteed and should be independently verified. The trademarks REALTOR®, REALTORS® and the REALTOR® logo are controlled by The Canadian Real Estate Association (CREA) and identify real estate professionals who are members of CREA. The trademarks MLS®, Multiple Listing Service® and the associated logos are owned by CREA and identify the quality of services provided by real estate professionals who are members of CREA.