



Edmonton Alberta

\$424,900

Amazing Home! Welcome to this BILEVEL ON A HUGE LOT, in the highly desirable area of Castle Downs! Offering elegance, and magnificent living spaces. The Main Floor hosts a warm living space imbued with natural light. The kitchen outstanding from every angle, showcases tasteful finishes, plenty of Counter space, Stainless Steel Appliances. The Main Floor showcases 2 Large Bedrooms, & a Full Bathrooms. The Fully Finished Basement has a Large Living Room, cozy family room, 2 large bedrooms, and a bathroom. Oversized Double Detached Garage. Large Backyard is your own private oasis, mature tree's, and shrubs. Upgrade's: Windows, Shingles, Flooring, Furnace, Water Tank, Kitchen, Bathrooms, Deck, A/C. Located in a quiet a Cul-De-Sac with plenty of schools and amenities. (id:6769)

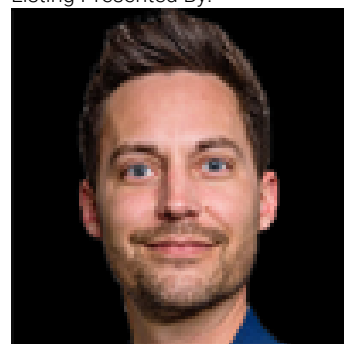
Bedroom 3 Measurements not available

Bedroom 4 Measurements not available

Primary Bedroom Measurements not available

Bedroom 2 Measurements not available

Listing Presented By:



Originally Listed by:
RE/MAX Excellence

<http://www.vincefiacco.com/>

RE/MAX ELITE

RE/MAX Elite Sherwood Park

#116, 150 Chippewa Rd ,
Edmonton, Alberta,

Phone: 780-984-9399

Fax:

steveleddy@hotmail.com