

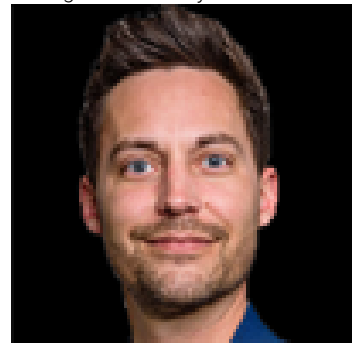


Rural Lac Ste Anne County Alberta

\$185,000

Located in the quiet community of Darbyson Estates, this 3.01-acre property is just minutes from the Ross Haven boat launch, making it a prime spot for both year-round living and seasonal getaways. The lot is well-treed, offering natural privacy and a serene backdrop for your future home. With excellent paved access along Hwy 43 and only a short section of gravel road into the subdivision, you can enjoy the peace of nature without sacrificing convenience. Whether you're planning to build now or hold as an investment, this property offers exceptional potential near the lake. (id:6769)

Listing Presented By:



Originally Listed by:
Century 21 Hi-Point Realty Ltd

<https://colinclarke.c21.ca/agent-homepage>

RE/MAX ELITE

RE/MAX Elite Sherwood Park

#116, 150 Chippewa Rd ,
Edmonton, Alberta,

Phone: 780-984-9399

Fax:

steveleddy@hotmail.com

The property information on this website is derived from the Canadian Real Estate Association's Data Distribution Facility (DDF®). DDF® references real estate listings held by various brokerage firms and franchisees. The accuracy of information is not guaranteed and should be independently verified. The trademarks REALTOR®, REALTORS® and the REALTOR® logo are controlled by The Canadian Real Estate Association (CREA) and identify real estate professionals who are members of CREA. The trademarks MLS®, Multiple Listing Service® and the associated logos are owned by CREA and identify the quality of services provided by real estate professionals who are members of CREA.