



## Edmonton Alberta

\$124,900

Excellent value for INVESTORS & FIRST-TIME HOME BUYERS! This well-kept one-bedroom unit situated on Main floor is located in a quiet, well-managed building in the family-friendly community of Wild Rose. It features a spacious bedroom, a full bathroom conveniently beside it, in-suite LAUNDRY and a functional kitchen with plenty of counter space and cabinetry. The dining area flows into a bright living room that opens onto a full-sized balcony, bringing in lots of natural light. A large in-suite storage room adds extra convenience. This move-in-ready home is in an excellent complex and offers quick access to parks, trails, shopping, the Meadows Recreation Centre, and major routes including Whitemud and Anthony Henday. Don't miss the chance of being a proud homeowner. (id:6769)

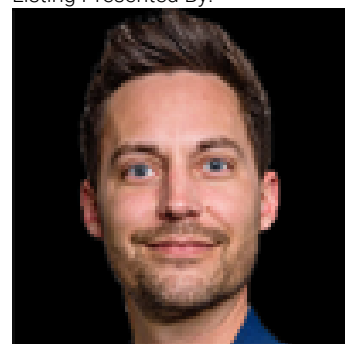
Living room Measurements not available

Dining room Measurements not available

Kitchen Measurements not available

Primary Bedroom Measurements not available

Listing Presented By:



Originally Listed by:  
MaxWell Polaris

**RE/MAX ELITE**

**RE/MAX Elite Sherwood Park**

#116, 150 Chippewa Rd ,  
Edmonton, Alberta,

Phone: 780-984-9399

Fax:

steveleddy@hotmail.com

The property information on this website is derived from the Canadian Real Estate Association's Data Distribution Facility (DDF®). DDF® references real estate listings held by various brokerage firms and franchisees. The accuracy of information is not guaranteed and should be independently verified. The trademarks REALTOR®, REALTORS® and the REALTOR® logo are controlled by The Canadian Real Estate Association (CREA) and identify real estate professionals who are members of CREA. The trademarks MLS®, Multiple Listing Service® and the associated logos are owned by CREA and identify the quality of services provided by real estate professionals who are members of CREA.