

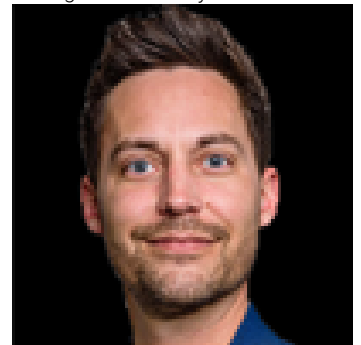


6710 158 Avenue 115 Edmonton AB

\$134,900

Welcome to this CHARMING MAIN-FLOOR CONDO in the peaceful neighborhood of Ozerna! Thoughtfully designed and perfectly compact, this home offers the IDEAL BLEND of privacy and comfort. The highly-desirable OPEN-CONCEPT layout features 2 BEDROOMS and 2 BATHROOMS, making it an EXCELLENT FIT for various lifestyles! The kitchen is BRIGHT AND WELCOMING with CRISP WHITE CABINETRY and a STYLISH MIX of WHITE and STAINLESS STEEL APPLIANCES. The living area is SPACIOUS, leading out to your OWN PRIVATE PATIO through the sliding doors! The PRIMARY BEDROOM is a TRUE RETREAT with its WALK-THROUGH CLOSET and CHIC 4PC ENSUITE! The additional bedroom and a SLEEK, CONTEMPORARY 4PC BATH add to the convenience, and you can also enjoy the ease of IN-SUITE LAUNDRY! Nestled close to all amenities and key transportation routes, this condo offers a LOW-MAINTENANCE LIFESTYLE with the added bonus of ULTIMATE CONVENIENCE! Don't miss your chance to view this INCREDIBLE home!

Listing Presented By:



Originally Listed by:
Exp Realty

hello@annettepurcell.com

RE/MAX ELITE

RE/MAX Elite Sherwood Park

#116, 150 Chippewa Rd ,
Edmonton, Alberta,

Phone: 780-984-9399

Fax:

steveleddy@hotmail.com