



Edmonton Alberta

\$399,900

Opportunity awaits in the desirable community of Sweetgrass! This judicial listing offers a spacious single-family home with great potential for investors or buyers looking to build equity. The main level features 1,270 sq ft with a functional layout, including a bright living area, kitchen, 3 bedrooms, and 2 bathrooms. The partially developed basement adds an additional 1,124 sq ft, complete with a large rec room, 3 more bedrooms, and a laundry/utility area—ideal for extended family or future redevelopment possibilities. Situated on a good-sized lot in a family-friendly neighborhood close to schools, parks, and amenities. Property is being sold as-is, where-is. A fantastic opportunity to bring your vision to life! (id:6769)

Bedroom 4 5.5 m X 4.17 m

Bedroom 5 3.81 m X 3.82 m

Recreation room 5.69 m X 8.07 m

Laundry room 3.31 m X 1.92 m

Utility room 1.65 m X 2.14 m

Living room 4.78 m X 4.24 m

Dining room 2.82 m X 4.03 m

Kitchen 2.73 m X 2.37 m

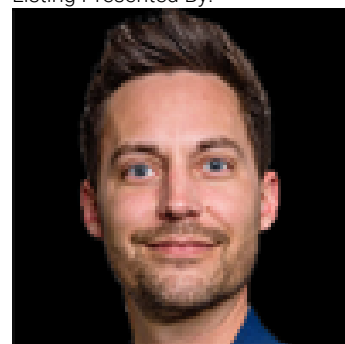
Primary Bedroom 3.77 m X 4.01 m

Bedroom 2 2.37 m X 3.13 m

Bedroom 3 3.04 m X 3.13 m

Breakfast 2.73 m X 2.09 m

Listing Presented By:



Originally Listed by:
Exp Realty

RE/MAX ELITE

RE/MAX Elite Sherwood Park

#116, 150 Chippewa Rd ,
Edmonton, Alberta,

Phone: 780-984-9399

Fax:

steveleddy@hotmail.com

The property information on this website is derived from the Canadian Real Estate Association's Data Distribution Facility (DDF®). DDF® references real estate listings held by various brokerage firms and franchisees. The accuracy of information is not guaranteed and should be independently verified. The trademarks REALTOR®, REALTORS® and the REALTOR® logo are controlled by The Canadian Real Estate Association (CREA) and identify real estate professionals who are members of CREA. The trademarks MLS®, Multiple Listing Service® and the associated logos are owned by CREA and identify the quality of services provided by real estate professionals who are members of CREA.