



## Edmonton Alberta

\$424,900

Discover this radiant & spacious bi-level half duplex, boasts an open-concept layout with vaulted ceiling that creates an inviting atmosphere. The main level is flooded with natural light from ample windows, & features a living room, a modern kitchen with a two-tier breakfast island, walk-in pantry, and stylish lighting, Two bedrooms and a 3-pc bathroom are thoughtfully located on this floor. Upstairs, an elegant primary bedroom offers a stunning three-piece ensuite with a quartz countertop. Fully finished basement perfect for movie nights with the family, 4th bedroom with 3-pc bath. Step out from the dining room onto the deck for summer BBQs or relax on the lower deck with your own gazebo in your beautifully landscaped, fully fenced yard that backs onto a scenic pathway. Additional features include air conditioner, double-attached garage, newer appliances, a built-in vacuum, situated in a prime location close to schools, shopping, amenities, Anthony Henday, Hwy 16, Don't miss out on this exceptional home (id:6769)

Bedroom 4 3.02m x 3.96m

Recreation room Measurements not available x 10.02 m

Living room 4.16m x 4.57m

Dining room 3.07m x 2.10m

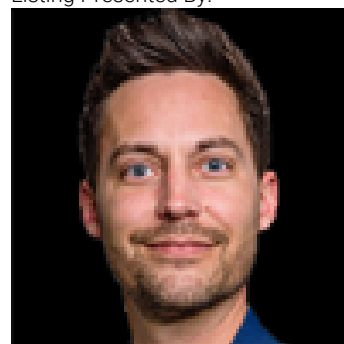
Kitchen 3.07m x 4.43m

Bedroom 2 3.19m x 3.02m

Bedroom 3 3.19m x 3.02m

Primary Bedroom 3.88m x 5.49m

Listing Presented By:



Originally Listed by:  
RE/MAX Excellence

**RE/MAX ELITE**

**RE/MAX Elite Sherwood Park**

#116, 150 Chippewa Rd ,  
Edmonton, Alberta,

Phone: 780-984-9399

Fax:

steveleddy@hotmail.com

The property information on this website is derived from the Canadian Real Estate Association's Data Distribution Facility (DDF®). DDF® references real estate listings held by various brokerage firms and franchisees. The accuracy of information is not guaranteed and should be independently verified. The trademarks REALTOR®, REALTORS® and the REALTOR® logo are controlled by The Canadian Real Estate Association (CREA) and identify real estate professionals who are members of CREA. The trademarks MLS®, Multiple Listing Service® and the associated logos are owned by CREA and identify the quality of services provided by real estate professionals who are members of CREA.