



Edmonton Alberta

\$539,900

Rare find! This unique hillside bungalow offers over 2,500 sq ft of living space and backs directly onto Canossa Lake. This home provides exceptional value and comfort. The main floor features a bright living room with built-in wall units, hardwood flooring, and a dining area complete with table and chairs. The kitchen includes all appliances, and all window coverings remain. There are 2 bedrooms, with the second currently used as a den. The walkout basement offers a spacious recreation area, a bedroom, a 3-piece bathroom, a large hobby/work area, and ample storage. All furniture stays. Additional features include newer shingles, main floor washer and dryer, and the safety and efficiency of two furnaces. The insulated storage shed has full electrical service. The front yard is low maintenance finished with decorative rock, shrubs, and flowers. Enjoy peaceful lake views.

(id:6769)

Bedroom 3 3.5 m X 3 m

Recreation room 7.12 m X 7.43 m

Living room 5 m X 4.34 m

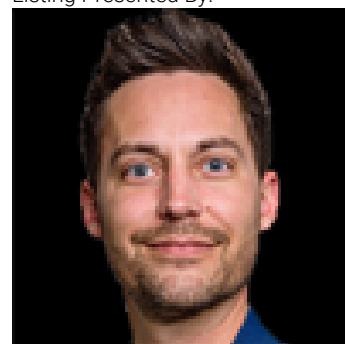
Dining room 4.53 m X 3.64 m

Kitchen 2.94 m X 5.1 m

Primary Bedroom 3.93 m X 3.02 m

Bedroom 2 4.03 m X 2.94 m

Listing Presented By:



Originally Listed by:
NOW Real Estate Group



RE/MAX Elite Sherwood Park

#116, 150 Chippewa Rd ,
Edmonton, Alberta,

Phone: 780-984-9399

Fax:

steveleddy@hotmail.com

The property information on this website is derived from the Canadian Real Estate Association's Data Distribution Facility (DDF®). DDF® references real estate listings held by various brokerage firms and franchisees. The accuracy of information is not guaranteed and should be independently verified. The trademarks REALTOR®, REALTORS® and the REALTOR® logo are controlled by The Canadian Real Estate Association (CREA) and identify real estate professionals who are members of CREA. The trademarks MLS®, Multiple Listing Service® and the associated logos are owned by CREA and identify the quality of services provided by real estate professionals who are members of CREA.