

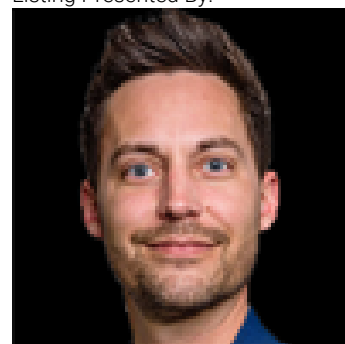


## Rural Athabasca County Alberta

\$184,900

ELLSCOTT - 2.86 serviced acres in East Park Estates! Nestled in the trees, this private acreage is gated and fenced w/a solid gravel driveway and is ideal as a recreational retreat or future dream home site. Features include a new 40x14 unfinished cabin w/ power & wood stove, plus a 24x12 powered guest cabin/quad storage. Massive covered 30.5x14 deck built to enclose & protect the included 2009 Puma RV (power/sewer/water/propane is in) creating a comfy sheltered living space & deck space. Additional improvements include a storage shed, large tarp shed, firepit w/ privacy fence, potable water tank (in shed), and in-ground sewer holding tank w/ RV hookups. The land offers groomed trails, mature trees, and ample space to host family & friends. Located on a school bus route (K-12) with a mix of recreational & full-time residences nearby. Just 15 km to Boyle and 113 km to Edmonton, with Long Lake & Skeleton Lake a short drive away for year-round recreation, golf & skiing. Ideal for outdoor enthusiasts! (id:6769)

Listing Presented By:



Originally Listed by:  
Exp Realty

<https://www.realtybykatie.com/>

**RE/MAX ELITE**

**RE/MAX Elite Sherwood Park**

#116, 150 Chippewa Rd ,  
Edmonton, Alberta,

Phone: 780-984-9399

Fax:

steveleddy@hotmail.com

The property information on this website is derived from the Canadian Real Estate Association's Data Distribution Facility (DDF®). DDF® references real estate listings held by various brokerage firms and franchisees. The accuracy of information is not guaranteed and should be independently verified. The trademarks REALTOR®, REALTORS® and the REALTOR® logo are controlled by The Canadian Real Estate Association (CREA) and identify real estate professionals who are members of CREA. The trademarks MLS®, Multiple Listing Service® and the associated logos are owned by CREA and identify the quality of services provided by real estate professionals who are members of CREA.