



Edmonton Alberta

\$189,000

A great start or investment! This 2 BR, 2 Bath corner unit townhome has more than meets the eye - including an open, modern, and bright design with updated kitchen, lighting, and paint, along with an updated main bath with soaker tub. The basement is the key to giving you extra space, with a large, modern family/rec room and office, and a newer furnace to help keep you warm in the winter. All of this is located in a quiet, easily accessible part of Londonderry Square, steps to public transportation, schools, swimming, skating, and Londonderry Mall. Come see why this is home. (id:6769)

Family room 4.8 m X 4.8 m

Den 3.6 m X 2.5 m

Utility room 4.6 m X 2.6 m

Living room 4.9 m X 3.8 m

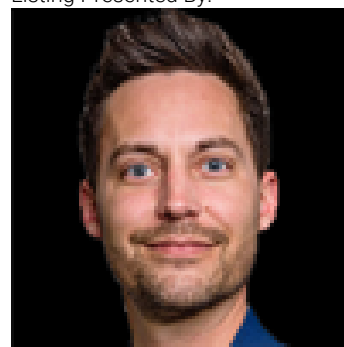
Dining room 2.4 m X 1.2 m

Kitchen 2.6 m X 2.4 m

Primary Bedroom 4.9 m X 3.3 m

Bedroom 2 3.9 m X 3.4 m

Listing Presented By:



Originally Listed by:
Sterling Real Estate

<http://www.primeedmontonrealestate.com/>

RE/MAX ELITE

RE/MAX Elite Sherwood Park

#116, 150 Chippewa Rd ,
Edmonton, Alberta,

Phone: 780-984-9399

Fax:

steveleddy@hotmail.com

The property information on this website is derived from the Canadian Real Estate Association's Data Distribution Facility (DDF®). DDF® references real estate listings held by various brokerage firms and franchisees. The accuracy of information is not guaranteed and should be independently verified. The trademarks REALTOR®, REALTORS® and the REALTOR® logo are controlled by The Canadian Real Estate Association (CREA) and identify real estate professionals who are members of CREA. The trademarks MLS®, Multiple Listing Service® and the associated logos are owned by CREA and identify the quality of services provided by real estate professionals who are members of CREA.