



## Rural Sturgeon County Alberta

\$2,249,999

This thoughtfully designed home showcases clean lines and REFINED STYLE across 4,875 sqft of finished living space. Featuring plenty of windows for natural light, durable wood-look tile flooring, central A/C, 6 bedrooms, & 4.5 baths. The well-appointed kitchen is a dream for culinary enthusiasts, offering ample cabinetry, quartz countertops, induction cooktop, Sub-Zero fridge & freezer, walk-in pantry, & wine storage. The dining area easily accommodates large gatherings, while the elegant living room is anchored by a cozy fireplace. Upstairs, enjoy built-in workstations & a luxurious primary suite with a 5pc ensuite & a connected screened-in HOT TUB RETREAT. The fully finished basement includes 2 bedrooms, 3pc bath, spacious family & recreation room, wet bar, & in-floor heating. The QUAD garage comes complete with a pet bath, built in storage, drain, & heated floors. Set on 0.52 acres of beautifully landscaped grounds with a charming covered rear deck, this home is a true masterpiece! (id:6769)

Family room 9.24 m X 6.64 m

Bedroom 5 4.55 m X 4.6 m

Bedroom 6 4.22 m X 4.95 m

Storage 5.13 m X 3.57 m

Living room 6.39 m X 4.26 m

Dining room 7.38 m X 3.07 m

Kitchen 7.36 m X 3.93 m

Bedroom 4 4.4 m X 3.58 m

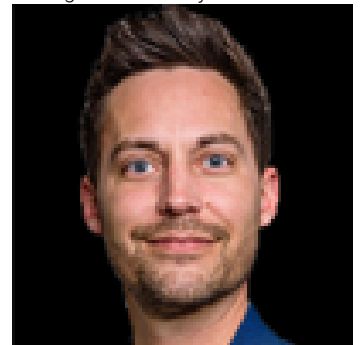
Primary Bedroom 5 m X 4.4 m

Bedroom 2 3.8 m X 4.6 m

Bedroom 3 3.77 m X 4.59 m

Laundry room 2.34 m X 3.45 m

Listing Presented By:



Originally Listed by:  
RE/MAX Elite

<http://www.pinorealtygroup.com/>

**RE/MAX ELITE**

**RE/MAX Elite Sherwood Park**

#116, 150 Chippewa Rd ,  
Edmonton, Alberta,

Phone: 780-984-9399

Fax:

steveleddy@hotmail.com

The property information on this website is derived from the Canadian Real Estate Association's Data Distribution Facility (DDF®). DDF® references real estate listings held by various brokerage firms and franchisees. The accuracy of information is not guaranteed and should be independently verified. The trademarks REALTOR®, REALTORS® and the REALTOR® logo are controlled by The Canadian Real Estate Association (CREA) and identify real estate professionals who are members of CREA. The trademarks MLS®, Multiple Listing Service® and the associated logos are owned by CREA and identify the quality of services provided by real estate professionals who are members of CREA.