



## Edmonton Alberta

\$604,900

This brand-new, 2-storey half duplex features a modern open-concept living area with quartz countertops and a main-floor bedroom with a 3-piece bathroom. Upstairs, you'll find three bedrooms, including a Primary with an ensuite and walk-in closet, plus a laundry room and a 4-piece bathroom. The property also includes a 2-bedroom legal suite and a double detached garage. \*Note that the property is currently still under construction. (id:6769)

Second Kitchen Measurements not available

Bedroom 5 Measurements not available

Bedroom 6 Measurements not available

Laundry room Measurements not available

Living room 5.87 m X 3.62 m

Dining room 3.34 m X 2.62 m

Kitchen 3 m X 4.46 m

Bedroom 4 2.72 m X 3.03 m

Primary Bedroom 4.28 m X 3.94 m

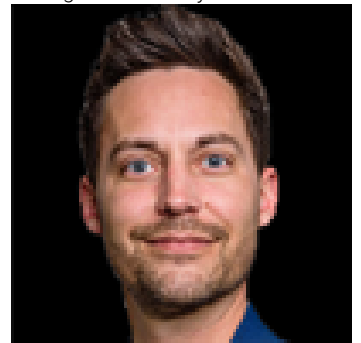
Bedroom 2 3.23 m X 2.87 m

Bedroom 3 3.22 m X 2.85 m

Bonus Room 3.04 m X 2.97 m

Laundry room 0.99 m X 1.72 m

Listing Presented By:



Originally Listed by:  
MaxWell Challenge Realty



**RE/MAX Elite Sherwood Park**

#116, 150 Chippewa Rd ,  
Edmonton, Alberta,

Phone: 780-984-9399

Fax:

steveleddy@hotmail.com